

## Expanded Planning Group

### HORTICULTURE

#### Level 1

Jessica Arcate  
Gary Bendykowski  
Joseph Brand  
Sarah Carter  
Jody Fetzer  
Marc Hachadourian  
James Harkins  
Peter Kukielski  
Richard Larson  
Luis Lemus  
Guillermo Lopez  
Joanna Payne  
Peter Provenzale  
Jonathan Riggers  
James Rolla  
Sonia Uytterhoeven  
Mabee Weinstein

#### Level 2

Ursula Chanse  
Francisca Coelho  
James Diermeier  
Margaret Falk  
Kurt Morrell

#### Level 3

Todd Forrest

### EDUCATION

#### Level 1

Toby Adams  
James Boyer  
Christina Colon, Ph.D.  
Sabine Stezenbach  
Lorraine DeRosa  
Amanda Uribe

#### Level 2

Jeff Downing  
Debra Epstein  
Donald Fulton  
Charles Yurgalevitch, Ph.D.

#### Level 3

Natalie Anderson

### LIBRARY

#### Level 1

Olga Marder  
Gordon McDaniel, Ph.D.  
John Mignault  
Stephen Sinon  
Donald Wheeler

#### Levels 2 and 3

Susan Fraser

### NYBG PRESS

#### Level 1

Nancy Carey  
Diedre Howson  
Nathan Smith

## SCIENCE

### Level 1

Emily Ashley  
Daniel Atha  
Ellen Bloch  
Eric Brenner, Ph.D.  
William Buck, Ph.D.  
Lisa Campbell, Ph.D.  
Roy Halling, Ph.D.  
Andrew Henderson, Ph.D.  
Kevin Indoe  
Jacqueline Kallunki, Ph.D.  
Anthony Kirchgessner  
Damon Little, Ph.D.  
James Luteyn, Ph.D.  
Elaine McElhinny  
Fabian Michelangeli, Ph.D.  
Robbin Moran, Ph.D.  
Scott Mori, Ph.D.  
Christine Padoch, Ph.D.  
Nestor Perez-Moliere  
Charles Peters, Ph.D.  
Susan Runko  
Hannah Stevens  
Stella Sylva  
Nicole Tarnowsky  
Melissa Tulig  
William Wayt Thomas, Ph.D.

### Level 2

Ken Cameron, Ph.D.  
Doug Daly, Ph.D.  
Lawrence Kelly, Ph.D.  
Amy Litt, Ph.D.  
Barbara Thiers, Ph.D.

### Level 2.5

Michael Balick, Ph.D.  
Dennis Wm. Stevenson, Ph.D.

### Level 3

James Miller, Ph.D.

## MARKETING, BUSINESS DEVELOPMENT, AND THE VISITOR EXPERIENCE

### Level 1

Margaret Csala  
Nicholas Leshi  
Richard Pickett  
George Shakespear  
Susan Siegrist  
Terry Skoda  
Thomas Traegler

### Level 2

Ellen Bruzelius  
Meryl Gordon  
Sally Armstrong Leone  
Marilan Lund  
Melinda Manning  
Nia Page  
Jennifer Rothman  
Kathleen Sutherland

### Level 2.5

Marisa Biehl  
Catherine Hipp  
Karl Lauby

### Level 3

Claudia Keenan Hough

## SITE OPERATIONS AND SECURITY

### Level 1

Robert Biedinger  
Joseph Ciervo  
Emir Kajoshi  
Parmanand Mohabir  
Orlanzo Williams

### Level 2

Mark Cupkovic  
Frank Morris

### Level 3

Robert Heinisch

## ADMINISTRATION

### Level 1

Mary Monahan  
Rosanna Terrero

### Level 2

Jacqueline Martinez  
Karen Yesnick

### Level 3

Sally Gavin

## GOVERNMENT

### Level 2

Elizabeth Figueroa

### Level 3

Rosemary Ginty

## CAPITAL PROJECTS

### Level 1

Wayne Cahilly  
Kathy Sullivan

### Level 2

William Fitzgerald  
Elizabeth Rivas

### Level 3

Michael Adlerstein

## FINANCE AND PLANNING

### Level 1

Miguel Espinoza  
Patricia Haugh  
Larry Nadel  
Celinett Rodriguez  
Carol Salera

### Level 2

Cathy Alexander  
AnneMarie Blancato  
Patrick Clancy  
Kevin Hogan  
Michael Miceli

### Level 3

Susan Maier

## LEGAL

### Level 2

Denis O'Connor

## DEVELOPMENT

### Level 1

Stephan Chenault  
Kris DiLorenzo  
Meems Ellenberg  
Amanda Mandaglio  
Catherine Sumner  
Susan Stanford

### Level 2

Richard Feiner  
Michael Gary  
Greg Jahaly  
Monica Reischmann

### Level 2.5

Jennifer Rominiecki

### Level 3

Mercia Weyand

### Level 4

Tim Landi

**MANAGEMENT AND ADMINISTRATION**

**Level 4**

J.V. Cossaboom

**EXECUTIVE MANAGEMENT**

**Level 5**

Gregory Long

**Consultants to  
Strategic Planning**

<b>Laurie D. Olin, FASLA</b> ..... <i>Principal</i> <i>Olin Partnership</i>	<b>Landscape Master Plan</b>
<b>James R. Braddock, AIA, LEED AP</b> ..... <i>Partner</i> <i>Mitchell/Giurgola Architects</i>	<b>Space Planning</b>
<b>Patricia O'Donnell, FASLA, AICP</b> ..... <i>Partner</i> <i>Heritage Landscapes</i>	<b>Cultural Landscape Report</b>
<b>Shavaun Towers, FASLA</b> ..... <i>Partner</i> <i>Towers/Golde</i>	<b>Azalea Way</b>
<b>Esther Schwalb</b> ..... <i>Senior Supervising Planner</i> <i>Parsons Brinckerhoff</i>	<b>Environmental Analysis – Twin Lakes</b>
<b>Tim Hartung, FAIA</b> ..... <b>Susan R. Rodriguez, FAIA</b> <i>Partners</i> <i>Polshek Partnership Architects</i>	<b>Façade Architect – Parking Garage</b>
<b>Timothy Tracy, PE</b> ..... <i>Vice President</i> <i>Desman Associates</i>	<b>Architect/Engineer Parking Garage</b>
<b>Daniel Nall, FAIA, PE, LEED AP</b> ..... ..... <i>Senior Vice President/Director – Advanced Technologies</i> <i>Flack + Kurtz</i>	<b>Engineer – Library Geothermal Air-Conditioning</b>
<b>Richard Dattner, FAIA</b> ..... <i>Principal</i> <i>Dattner Architects</i>	<b>School Group Entrance</b>
<b>Hugh Hardy, FAIA</b> ..... <i>Partner</i> <i>H<sup>3</sup> Hardy Collaboration Architecture</i>	<b>Public Program Facility</b>
<b>Leni Schwendinger</b> ..... <i>Principal</i> <i>Leni Schwendinger Light Projects Ltd.</i>	<b>Lighting Design</b>

- Gabe Guillians** ..... **Lighting Engineer**  
*Consultant*  
*ARUP*
- Bud Motzkin, RA** ..... **Conservatory Enhancements**  
*Director of Architecture*  
*Jan Hird Pokorny Associates*
- David W. Wolfe, Ph.D.** ..... **Climate Change**  
*Professor of Plant Ecology*  
*Department of Horticulture, Cornell University*
- Cameron P. Wake, Ph.D.** ..... **Climate Change**  
*Research Associate Professor*  
*Climate Change Research Center, University of New Hampshire*
- Lynn J. Branigan** ..... **E-Commerce Initiative**  
*Marketing Consultant*
- Ron Fierman** ..... **E-Commerce Initiative**  
*President*  
*Digital Pulp*
- Roddy Austin** ..... **Library Digitization**  
*President*  
*RGA Consulting, Inc.*
- Barbara Taranto** ..... **Library Digitization**  
*Director of the Digital Library Program*  
*The New York Public Library*
- Tom Eccles** ..... **Exhibition Planning**  
*Executive Director*  
*Center for Curatorial Studies, Bard College*
- Bruce Laval** ..... **Visitor Experience**  
*Management Consultant*  
*Bruce Laval & Associates*
- Michael C. Redmond** ..... **Disaster Recovery**  
*CEO*  
*Redmond Worldwide, Inc.*
- Linda Fan** ..... **Bond Financing**  
*Managing Director*  
*Prager, Sealey & Co., LLC*

## Facts about the Garden in 2008

The New York Botanical Garden is unique among museums and public places in America, distinguished by the beauty of its historic landscapes, collections, and gardens as well as the scope and excellence of its programs in horticulture, education, and science. The Botanical Garden's curated living collections contain more than one million plants; its continuing education program is the largest and most diverse at any botanical garden in the world; its children's education program has been a pioneer in innovative, informal science discovery facilities and activities; and its scientific research on plants and fungi is unmatched in scope, depth, authority, and excellence.

The Botanical Garden's resources are as exceptional as its programs. They include the most important botanical and horticultural library in the world and the fourth largest herbarium in the world, which is also the largest in the Western Hemisphere. The greenhouses are the most sophisticated behind-the-scenes facility at any botanical garden in the U.S., and the conservatory—a New York City Landmark—is the largest Victorian-style glasshouse in America. The Garden also offers sweeping landscapes and curated gardens, expansive forests and artful plantings, and a wealth of programs, exhibitions, and activities for visitors to enjoy. The grounds display masterpieces by many of the nation's most accomplished architects and designers, both past and contemporary. The Botanical Garden's innovative programs, unparalleled resources, and talented staff are rivaled by few and exceeded by none.

### I. Illustrious History and Bright Future

- The New York Botanical Garden was established on April 18, 1891, on land set aside by the State Legislature for the creation of “a public botanic garden of the highest class” for the City of New York.
- Each year, more than 750,000 visitors from the region and around the world come to the Botanical Garden. Over one million access information via its award-winning Web site.
- The Botanical Garden generated an overall economic impact on New York City of approximately \$120 million in fiscal 2007.
- During the last 16 years, the Garden has undergone a comprehensive renaissance in facilities and programs, the result of campaigns that have raised over \$600 million, including \$250 million for capital improvements.

### II. Outstanding Plants in 50 Gardens and Collections

- Living collections contain more than one million plants.
- Enid A. Haupt Conservatory, the nation's preeminent Victorian-style glasshouse, offers an ecotour of the world, including tropical rain forests, deserts of the Americas and Africa, carnivorous plants, subtropicals, and aquatic plants in temperate and tropical pools.
- Nolen Greenhouses for Living Collections, opened in May 2005, are the most sophisticated behind-the-scenes greenhouses of any botanical garden in the U.S.

- Fifty-acre tract of the native Forest that once covered New York City is the largest extant remnant.
- Thirty-seven-acre Arthur and Janet Ross Conifer Arboretum contains 1,500 trees, featuring more than 300 mature specimens of firs, pines, and spruces planted in the early 20th century.
- Fifteen-acre Benenson Ornamental Conifers, the largest landscape restoration project ever undertaken at the Garden, completed in October 2004, includes among its 500 conifers outstanding new cultivars as well as rare mature specimens planted in the 1940s.
- Herbaceous and mixed borders feature groundbreaking design and plant materials. The Peggy Rockefeller Rose Garden, Jane Watson Irwin Perennial Garden, and Ladies' Border, among others, represent some of the best garden design and innovative plantsmanship in the country, from the early 20th century to the present.
- Two-and-one-half-acre Rock Garden, one of the largest in the world, displays thousands of colorful alpine flowers and plants from all seven continents.
- Exquisite orchid collection features 8,125 plants.
- Thirty-thousand distinguished trees, many more than 200 years old, include major collections of oaks, maples, legumes, magnolias, cherries, crabapples, and an exceptional range of notable individual specimens.
- Home Gardening Center, opened in September 2005, is an active outdoor classroom and information resource with gardens and demonstration areas.
- Bronx Green-Up, an outreach program, has created more than 300 community and school gardens throughout the Bronx and provides ongoing horticultural and technical advice.

### III. Pace-setting Educational Programs for Ph.D. Candidates to Toddlers

- Largest graduate studies program at any botanical garden in the world, established in 1896, addresses the shortage of biological scientists; 256 degrees have been granted, including 176 Ph.D.s.
  - This program has grown to include five premier universities (CUNY, Columbia, Cornell, New York University, and Yale), enrolling an annual average of 40 students during recent years. It has also built a network of graduates in key positions at institutions and universities around the world.
- The nationally accredited School of Professional Horticulture offers a two-year, full-time program that combines academic studies with hands-on practical training.

- Continuing Education, the largest and most diverse continuing education program at any botanical garden, highlights:
  - 4,400 students, representing more than 11,000 registrations, participate in 521 courses that include over 900 section offerings at the Botanical Garden and six off-site locations in Manhattan, Westchester, and Connecticut.
  - Certificates are offered in seven program areas.
  - Three annual lecture series feature internationally recognized speakers.
  - 32 courses are recognized as equivalent to college-level instruction by the Board of Regents of the State University of New York. The New York Botanical Garden is the only botanical garden to receive this recognition.
- Children's Education, a leading program in the informal science education field, highlights:
  - With its several unique learning facilities—the Everett Children's Adventure Garden, quarter-mile-long Mitsubishi Wild Wetland Trail, Ruth Rea Howell Family Garden, and GreenSchool—the Botanical Garden is one of the country's foremost environmental education institutions for students of all ages and abilities.
  - Nearly 375,000 children, their families, and teachers from across the New York metropolitan area attended children's programs in fiscal 2007.
  - The Everett Children's Adventure Garden trained 174 high school and middle school interns in fiscal 2007.
  - Nearly 3,000 teachers were trained by the Professional Development Program through 4 week-long institutes, 30 workshops, and over 50 seminars.
  - Three SEEDS (Science Exploration and Education Discovery Series) science curriculum units have been developed for grades K–1, 2–3, and 4–5 and are being published and disseminated by Kendall/Hunt Publishing Company, the country's leading publisher of K–12 standards-based curricula.
  - Two national science curriculum units—Economic Botany for grades 6–8 and Ethnobotany for grades 9–11—are currently being developed.

### IV. World Leadership in Research on Plants and Fungi

- The New York Botanical Garden is among the top three freestanding botanical gardens in the world where plant research is conducted. The outstanding staff and unparalleled resources of our International Plant Science Center, distinguished in scope, depth, authority, and excellence, position the Garden at the forefront of worldwide botanical research.

- William and Lynda Steere Herbarium is the fourth largest herbarium in the world and the largest in the Western Hemisphere.
  - It houses 7.3 million specimens, representing all groups of plants and fungi from around the world, with exceptional strength in the flora of the Americas.
  - Specimens have been collected from every continent and date from the 18th century to the present.
- C.V. Starr Virtual Herbarium provides instant Internet access to information on more than 1 million specimens in the Steere Herbarium. In the Digital Imaging Center, approximately 45,000 new records are added each year.
- LuEsther T. Mertz Library is the most important botanical and horticultural library in the world.
  - It holds more than one million items spanning ten centuries, encompassing 72 languages and one mile of archival materials.
  - Oldest item in the collection is a manuscript, *Circa instans*, ca. 1190.
  - It facilitates approximately 33,000 visitors and information requests annually.
- New state-of-the-art facility, the 28,000-square-foot Pfizer Plant Research Laboratory, opened in May 2006, tripled the Botanical Garden's former research capabilities.
- The New York Botanical Garden is the only botanical garden in the world with major new facilities for its library, herbarium, and research laboratory—all opened within the last five years.
- The Botanical Garden's 200 scientists, staff, graduate students, and honorary research associates and curators perform fieldwork and conduct cutting-edge research in plant systematics, economic botany, ecology, molecular systematics, and plant genomics.
- Since its beginning in 1994, the Lewis B. and Dorothy Cullman Program for Molecular Systematics Studies has established the Botanical Garden as a leading center for molecular systematics research and study.
- The New York Plant Genomics Consortium, formed in 2000, received a \$5 million National Science Foundation grant in September 2004, to study the genetic properties of seed evolution.
- The Botanical Garden's Institute of Economic Botany is one of the largest centers for the study of ethnobotany and economic botany in the U.S.
- The New York Botanical Garden Press conducts one of the largest science publication programs of any botanical garden, publishing journals, monographs, and books for the scientific community; 3,995 new pages were published in fiscal 2007.

- Botanical Garden scientists authored more than 200 publications in fiscal 2007, ranging from research papers in scientific journals to stand-alone publications and textbooks.
- Botanical Garden scientists also publish thousands of Web pages annually, many on separate scientific sites, all linked via the Garden's Science Web site.

#### V. Innovative Exhibitions, Flower Shows, and Other Visitor Attractions

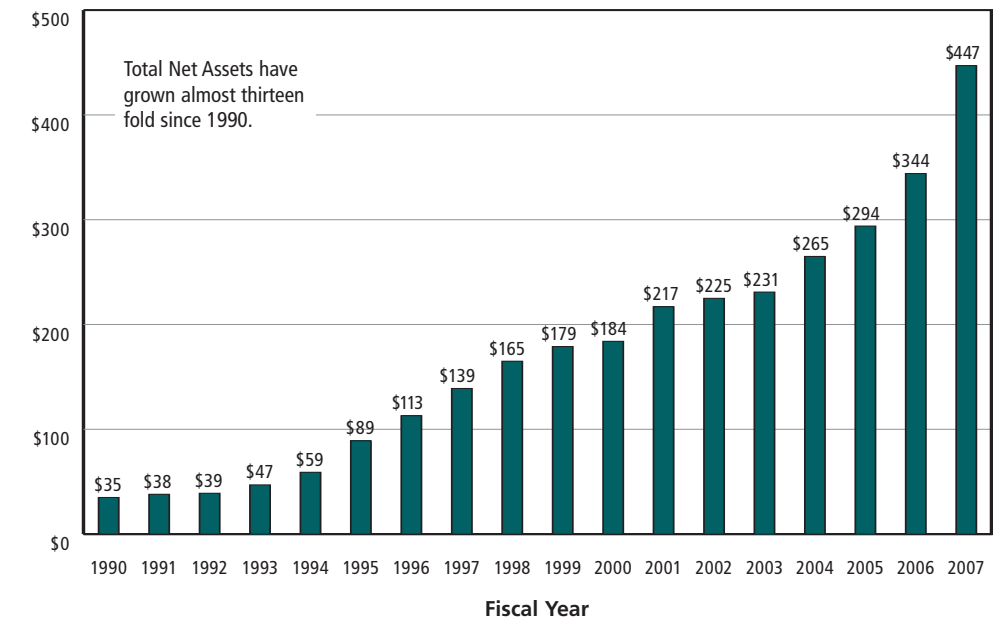
- Seasonal exhibitions in the Enid A. Haupt Conservatory, including the annual *Holiday Train Show*, *The Orchid Show*, and magnificent spring flower show, as well as special exhibitions such as *Primrose Palette* in the Bourke-Sullivan Display House educate and delight thousands of visitors each year.
- LuEsther T. Mertz Library presents world-class public exhibitions of rare botanical prints and books of horticultural history, landscape design, and plant science with accompanying scholarly publications.
- *Plants and Fungi: Ten Current Research Stories* presents examples of the Botanical Garden's biodiversity research around the world in an ongoing exhibition in the Britton Science Rotunda and Gallery, opened in October 2005.
- Shop in the Garden “imaginatively redefines the category” of museum gift stores, according to *House & Garden* magazine (December 2005). The Shop offers the most extensive gardening and horticultural book selection in the country as well as specialty plants and a wide variety of nature-inspired products, from furniture and jewelry to garden ornaments.

#### VI. Landmark Grounds and Buildings

- The New York Botanical Garden is a 250-acre site, which has been designated a National Historic Landmark.
- The Bronx River, New York City's only freshwater river, runs through the heart of the native Forest in a magnificent rock gorge.
- The Botanical Garden is home to the country's largest Victorian-style glasshouse, the Enid A. Haupt Conservatory, a New York City Landmark, completed in 1902 and restored in 1994–97 by Beyer Blinder Belle.
- Other historic buildings include the Snuff Mill (1840), a National Historic Landmark and New York City Landmark, the Stone Cottage (1840), and the Library building (1901).
- The Garden has an extensive portfolio of work by outstanding architects, landscape architects and designers, and garden designers, including Lord & Burnham, Robert Gibson, Calvert Vaux, Frederick Law Olmsted Partners, Beatrix Jones Farrand, Ellen Biddle Shipman, Marian Cruger Coffin, Penelope Hobhouse, and Lynden B. Miller.

- The tradition of architectural excellence continues with new facilities by today's leading architects, including Garden Cafe and Terrace Room (1997) by Cooper, Robertson & Partners; Everett Children's Adventure Garden (1998) by Richard Dattner; William and Lynda Steere Herbarium (2002) by Polshek Partnership Architects; Leon Levy Visitor Center (2004) by H<sup>3</sup> Hardy Collaboration Architecture; Nolen Greenhouses for Living Collections (2005) by Mitchell/Giurgola Architects; and Pfizer Plant Research Laboratory (2006) by Polshek Partnership Architects.

**Total Net Assets  
(Total Assets Less Total  
Liabilities as of 6/30/07)**  
(in Millions)



THE NEW YORK BOTANICAL GARDEN

Operating Revenue Projections Fiscal 2008

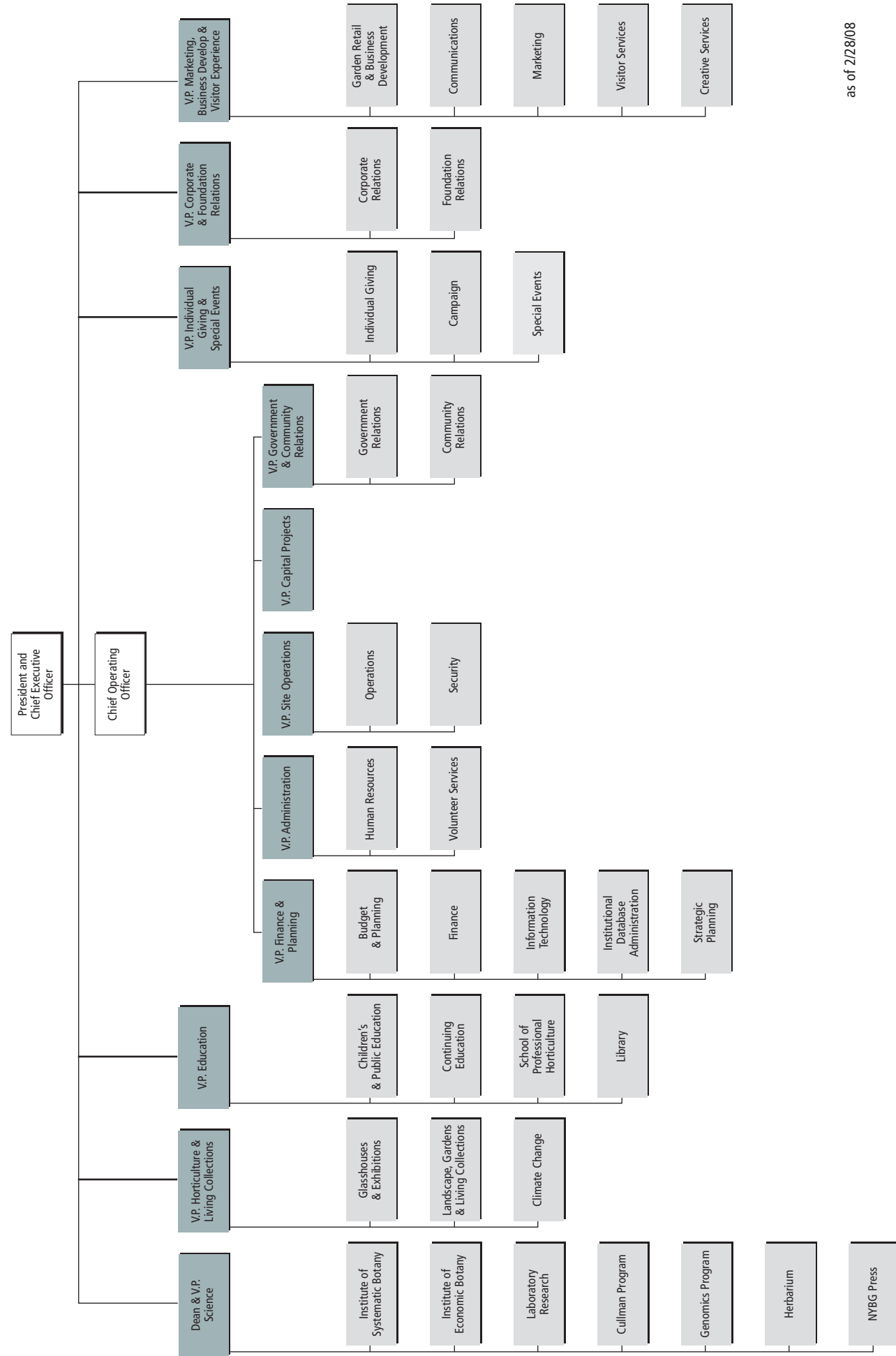
<b>I.</b>	<b>Private Fundraising</b>	
a.	Annual Fund	15,711,969
b.	Fundraising Events	5,183,279
	<b>SUBTOTAL PRIVATE FUNDRAISING</b>	<b>\$ 20,895,248</b>
<b>II.</b>	<b>Government Support</b>	
a.	New York City Appropriation	5,564,497
b.	NYC Energy, Pension, and Restricted Programs	3,145,954
c.	New York State Support	1,465,000
d.	Federal Government Grants	1,998,633
	<b>SUBTOTAL GOVERNMENT SUPPORT</b>	<b>\$ 12,174,084</b>
<b>III.</b>	<b>Earned Income</b>	
a.	Tuition & Fees	2,299,167
b.	Private Contracts	192,000
c.	NYBG Press	271,764
d.	Membership Income	3,505,000
e.	Admissions/Parking	4,955,000
f.	Group Tours Income	214,000
g.	Shop in the Garden	3,105,000
h.	E-Retail	1,062,554
i.	Licensing	145,000
j.	Food Service	948,000
k.	Miscellaneous Income	756,000
l.	Earned Income Hedge	(83,000)
	<b>SUBTOTAL EARNED INCOME</b>	<b>\$ 17,370,485</b>
<b>IV.</b>	<b>Endowment/Investment Income</b>	
a.	Endowment/Investment Income	11,753,000
	<b>SUBTOTAL ENDOWMENT/INVESTMENT INCOME</b>	<b>\$ 11,753,000</b>
	<b>TOTAL INCOME</b>	<b>\$ 62,192,817</b>

THE NEW YORK BOTANICAL GARDEN

Operating Expense Projections Fiscal 2008

<b>I.</b>	<b>Program and Public Services</b>	
a.	Science	7,480,000
b.	Horticulture	7,756,000
c.	Education	3,720,000
d.	Library	1,844,000
e.	NYBG Press	441,000
f.	Operations	6,537,000
g.	Security	3,022,000
h.	Visitor Experience	3,198,000
i.	Advertising/Marketing/Public Relations	4,131,000
j.	Membership (including Discounts)	2,717,000
	<b>SUBTOTAL PROGRAM AND PUBLIC SERVICES</b>	<b>\$ 40,846,000</b>
<b>II.</b>	<b>Support Services</b>	
a.	Finance and Administration	5,386,000
b.	Institutional Services	2,973,710
c.	Special Events	2,654,378
d.	Development	3,675,000
e.	Executive Management	602,280
	<b>SUBTOTAL SUPPORT SERVICES</b>	<b>\$ 15,291,368</b>
<b>III.</b>	<b>Auxiliary and Capital Expense</b>	
a.	Shop in the Garden	2,797,721
b.	E-Retail	1,435,467
c.	Licensing	458,901
d.	Food Service	180,000
e.	Group Tours	148,716
f.	Capital Staffing/Capital Transfers	1,034,434
	<b>SUBTOTAL AUXILIARY AND CAPITAL EXPENSE</b>	<b>\$ 6,055,239</b>
	<b>TOTAL EXPENSES</b>	<b>\$ 62,192,817</b>

# The New York Botanical Garden Senior Management



as of 2/28/08



The New York Botanical Garden is located on property owned in full by the City of New York, and its operation is made possible in part by public funds provided through the New York City Department of Cultural Affairs. A portion of the Garden's general operating funds is provided by the New York City Council and the New York State Office of Parks, Recreation and Historic Preservation. The Bronx Borough President and Bronx elected representatives in the City Council and State Legislature provide leadership funding.

[www.nybg.org](http://www.nybg.org) 718.817.8700



Recycled  
Supporting responsible  
use of forest resources  
Cert no. SCS-COC-083712  
www.fsc.org  
© 1996 Forest Stewardship Council  
Printed on FSC certified paper.