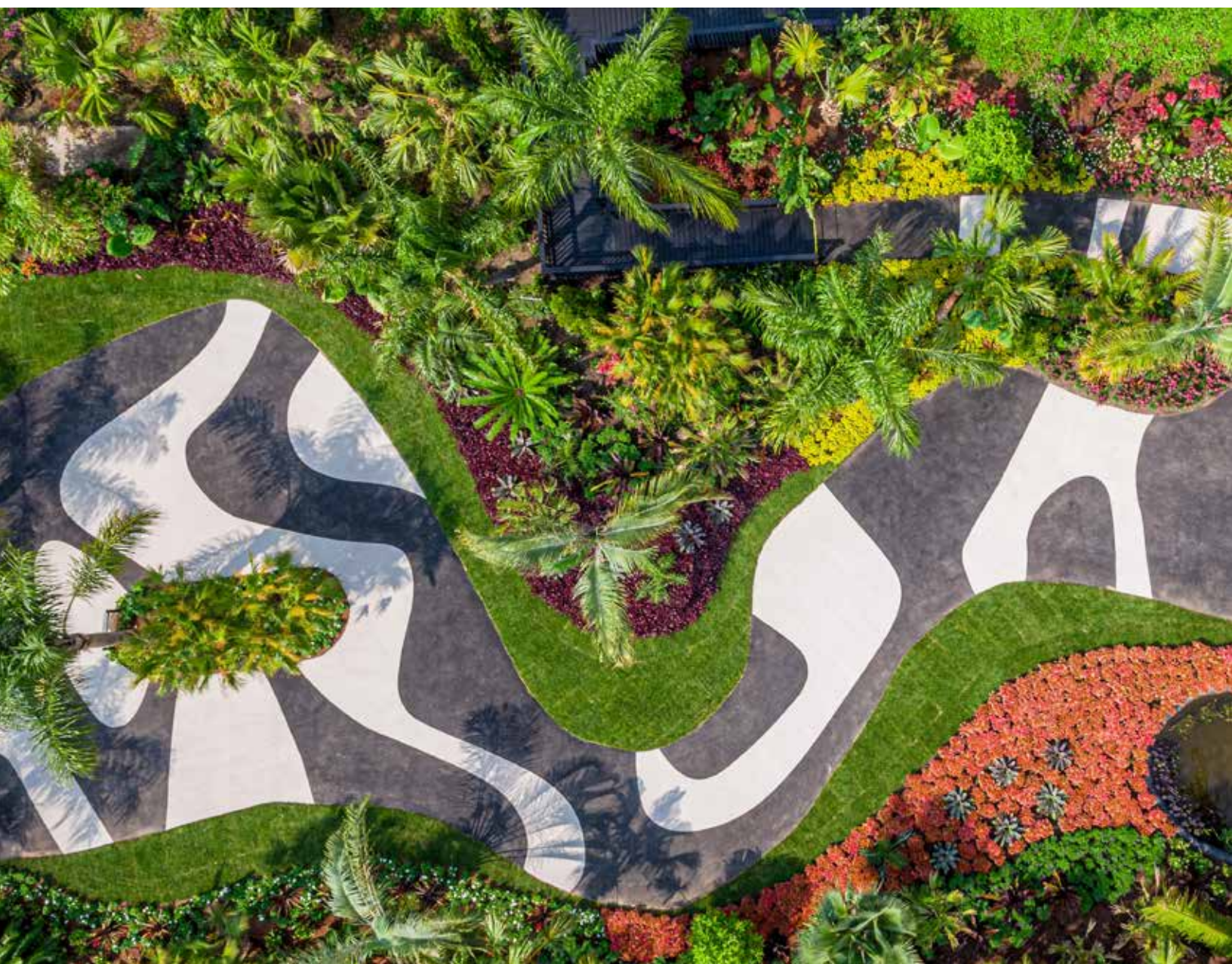


NYBG

ANNUAL REPORT
2019

NEW YORK BOTANICAL GARDEN





Contents

Letter from Carrie Rebora Barratt, Ph.D.	5
Caring for Our Living Collections	6
Enriching the Cultural Fabric of New York City	8
Educating Students of All Ages About Plant Science	10
Serving Our Bronx Community	12
Protecting Earth's Biodiversity	14
Financial Report	16
Board of Trustees	19
Committees of the Board and Corporation	20
Benefactors in Perpetuity	22
Permanent Endowments	24
Special Events Leadership	26
Perennial Society	28
Exhibition Donors	30

Cover: The Conservatory Lawn was transformed into a stunning Modernist Garden during *Brazilian Modern: The Living Art of Roberto Burle Marx*, NYBG's largest botanical exhibition ever presented.



Letter from Carrie Reborá Barratt, Ph.D.



Dear Friends:

It has been a rewarding year at the Garden. I couldn't be prouder of our staff, for their exceedingly hard work and steadfast devotion to our world-class landscape and collections, our innovative educational programs, vital scientific research, and all that supports the day-to-day and long-range care for our iconic living museum of plants.

For many months, we have been involved in developing a new strategic plan, which will set the course of continuity, stewardship, and growth for years to come. Staff across the Garden are engaged, energized, and thinking about the future of our venerable institution, with exciting and practical initiatives in four areas: Institution, Plant Science, Garden Experience, and Education. We remain committed to be fiscally stable and diverse, governed by a dedicated Board and run by a devoted and professional staff.

The renovation of our Haupt Conservatory Palm Dome exemplifies our dedication to past and future: a complex project involving not only the compression ring, but also heating, offices, and restroom upgrades, taking great care of our treasured Conservatory and its collections. With the palm dome project underway, we took our world-class exhibition program out into the Garden to create a beautiful Brazilian modernist landscape, designed by Raymond Jungles channeling his great mentor, Roberto Burle Marx. *Brazilian Modern: The Living Art of Roberto Burle Marx* was a great success, with more than 200,000 visitors who were transported to Rio in the Bronx.

Across the Garden, we provide a continuum of education programs, a progression that takes a plant lover from toddler to teen to adult in a transformative way. In June our Edible Academy celebrated its one-year anniversary and reached the 100,000-visitor milestone. Bronx Green-Up, the heart of NYBG's community gardening outreach programs for more than 30 years, supports our neighbors turning vacant lots into a network of flourishing vegetable gardens, where the NYC Compost Project, hosted by NYBG, also thrives.

We celebrated another anniversary this year: 100 years since the Garden offered its first formal classes in horticulture, for veterans returning from World War I. Today we remain committed to studying plant life and instilling lifelong curiosity and passion in our thousands of annual adult students, and are about to launch a new program for veterans. Stay tuned...

Another important project begun this fiscal year was increasing our participation in Climate Week NYC in conjunction with the UN Climate Action Summit. Also beyond our gates, NYBG scientist and Amazon expert Dr. Doug Daly continued his active, long-term project in the Brazilian state of Rondônia region—the epicenter of the recent firestorm—in collaboration with local partners in training, scientific exchange, collecting, exploration and conservation.

Through the Garden's critical work, locally and around the world, we promote plants and the importance of plant life, extending the Garden's global scientific and environmental leadership in plant biodiversity and conservation, all of which enriches human life.

Enjoy the program and financial highlights presented in this Report. Thank you for your crucial support. You help us to continue to expand our scope and influence in many important and meaningful ways. Together, we look to the future with responsibility and accountability and a shared love of plants.

Carrie Reborá Barratt, Ph.D.
CEO & The William C. Steere Sr. President



NYBG is a treasured green oasis in the densely populated borough of the Bronx, with more than 50 specialty gardens, an old-growth forest, extensive and diverse plant collections, and floral displays, both outdoors and under glass, that connect visitors to the natural world. The Garden maintains its living collections through the application of best practices in horticulture and plant health care. Its Nolen Greenhouses propagate tropical, orchid, and desert plants for seasonal displays, education programs, and scientific research. Fiscal year highlights include:

NYBG began a large-scale renovation of the Conservatory's iconic palm dome and two adjacent galleries, focusing on upgrading the mechanical operation of the dome's 1/4-inch thick glass windows, misting system, heating, and lighting. The restoration will improve the building's energy efficiency, while respecting its New York City and National Historic Landmark status. As work commenced, visitors were temporarily rerouted through refreshed adjacent galleries, which highlight permanent collections staff favorites in our ongoing exhibition, *Biophilia: Sharing Our #plantlove*.

A specimen of the Corpse Flower, *Amorphophallus titanum*, bloomed for excited and curious audiences in the Enid A. Haupt Conservatory. It was the fifth blooming specimen NYBG horticulturists have produced in recent years and the third displayed.

New methods of pruning, mulching, and pest control were introduced to the Peggy Rockefeller Rose Garden to facilitate health of the roses, with a wide range of new organic fertilizers and fungicides applied.

NYBG staff developed new protocols to inventory and assess the condition of the Garden's historic tree collection and create a tree canopy assessment plan that will assist in the stewardship of trees in the most heavily visited areas.





Since 2008, annual innovative, blockbuster exhibitions have demonstrated the connections among plants, gardens, arts, humanities, and science, and people. This year, the Garden presented its largest botanical exhibition ever, *Brazilian Modern: The Living Art of Roberto Burle Marx* (June 8–September 29, 2019). The extensive Modernist Garden on the Conservatory Lawn featured thousands of tropical plants, ranging from towering palms to colorful bedding plants, a sculptural water feature, and patterned pathways, conceptualized by famed landscape architect and Burle Marx protégé Raymond Jungles.



The living exhibitions were complemented by a display of 12 original works of art by Burle Marx, including paintings, drawings, lithographs, and textiles, in the Mertz Library's Art Gallery, guest curated by art historian Edward J. Sullivan, Ph.D. *Viagens de Coleta: Journeys through Brazil*, an exploration of the Garden's long history of plant research in Brazil, was displayed in the Britton Gallery. A Poetry Walk brought together the work of Elizabeth Bishop and modernist Brazilian poets, guest curated by poet and educator, Antonio Sergio Bessa, Ph.D. Other fiscal year highlights include:



The 27th Annual *Holiday Train Show*[®] (November 17, 2018–January 21, 2019) featured G-scale model trains and models of historic landmark structures of New York City and the Hudson River Valley, all fabricated from plant materials by Paul Busse's team at Applied Imagination. A new addition to the display of Lower Manhattan and New York Harbor included an illuminated, 11-foot-tall model of One World Trade Center.



The Orchid Show: Singapore (February 23–April 28, 2019) paid homage to Singapore's history of orchid cultivation and two of its iconic gardens: Gardens by the Bay and the Singapore Botanic Gardens, both of which collaborated with NYBG for the exhibition, with the latter loaning a golden arch orchid, the *Oncidium* 'Goldiana.' Large imitation "supertrees" and newly fabricated arches transformed the Conservatory into a contemporary tropical oasis, making it the most-visited of NYBG's 17 orchid shows, with 18,000 visitors.

The LuEsther T. Mertz Library, a thriving center for research on the study of botany, horticulture, and the role plants play in our history, drew 10,345 visitors last year from 18 countries who conducted research accessing its well-curated and comprehensive holdings of plant, garden, and landscape-related knowledge. For students from across New York City, the Mertz Library continues to serve a satellite research center. Particularly for scholars in the Humanities Institute, the Library's rich historical collections enabled them to explore complex, interdisciplinary topics in landscape and building design, urban social history, environmental policy, and anthropology.



The Mertz Library added 3,743 books this year to its collection of over 560,000 volumes, including rare book donations from the estate of Dr. David Andrews, and close to 52 million digital records were retrieved in the digital Library.

EDUCATING STUDENTS OF ALL AGES ABOUT PLANT SCIENCE



Children's Education: NYBG is one of the country's foremost environmental education institutions for students of all ages and abilities, providing hands-on science and edible gardening programs, serving 330,000 children, caregivers, students in fiscal year 2019. More than 80,000 students participated in immersive, hands-on, STEM-based education programs on-site; about 80% of the students came from Title I schools and 57% were from the Bronx. Programs took place in our two major education facilities: the Everett Children's Adventure Garden, which has served 3.5 million visitors since it opened in 1998 and where a major renovation is in conceptual planning and slated to begin in 2021, as well as the newly opened and all-season Edible Academy complex, which celebrated its first full year of year-round programming, drawing more than 100,000 students and other Garden visitors to its gardens, greenhouse, and state-of-the-art classrooms.



There were more than 3,500 teacher visits for the Professional Learning Program, the highest attendance since its start in 1995. NYBG introduced a new multi-visit School Partnership Program with ten Bronx-based, Title I schools. Classes from these schools visited the Edible Academy five times during the year. Working with the Education Department at Lehman College of the City University of New York and several focus groups of teachers, NYBG is creating a robust evaluation protocol for the partnership program.

GreenSchool, which conducts lessons at the Enid A. Haupt Conservatory for middle school students, implemented a *Blockbuster Training* in the Thain Family Forest with the Lower Hudson Valley Partnership for Regional Invasive Species Management for about 20 students from GEAR-UP (Gaining Early Awareness and Readiness for Undergraduate Programs), a program with the Bronx Institute, located on the Lehman College Campus. For its 12th year, the Bronx Institute at Lehman College secured year-round GEAR-UP funding to introduce Bronx middle and high school students to science careers at the Garden, collaborating with scientists in NYBG's Institute of Economic Botany.



Adult Education: During fiscal year 2019, the Garden offered three recurring lecture programs, including the Landscape Design Portfolios Lecture Series, now in its 20th year. The Lectures and Symposia program continued in concert with Horticulture, Science, and the Humanities Institute; offerings included a conversation with landscape architect Raymond Jungles and other experts on Brazilian modernist Roberto Burle Marx and his unique perspective and influence, and a sold-out premiere of the documentary film *Beatrix Farrand's American Landscapes*.

In June 2019, 105 graduation certificates were awarded in seven disciplines, including the new Urban Naturalist program. The newly licensed School of Horticulture and Landscape Design doubled the number of enrolled students from last year to 40, while other classes required additional sections added or participation caps increased to meet high demand. The Garden also offered a new 24-class Non-Certificate program, Food and Drink.



SERVING OUR BRONX COMMUNITY

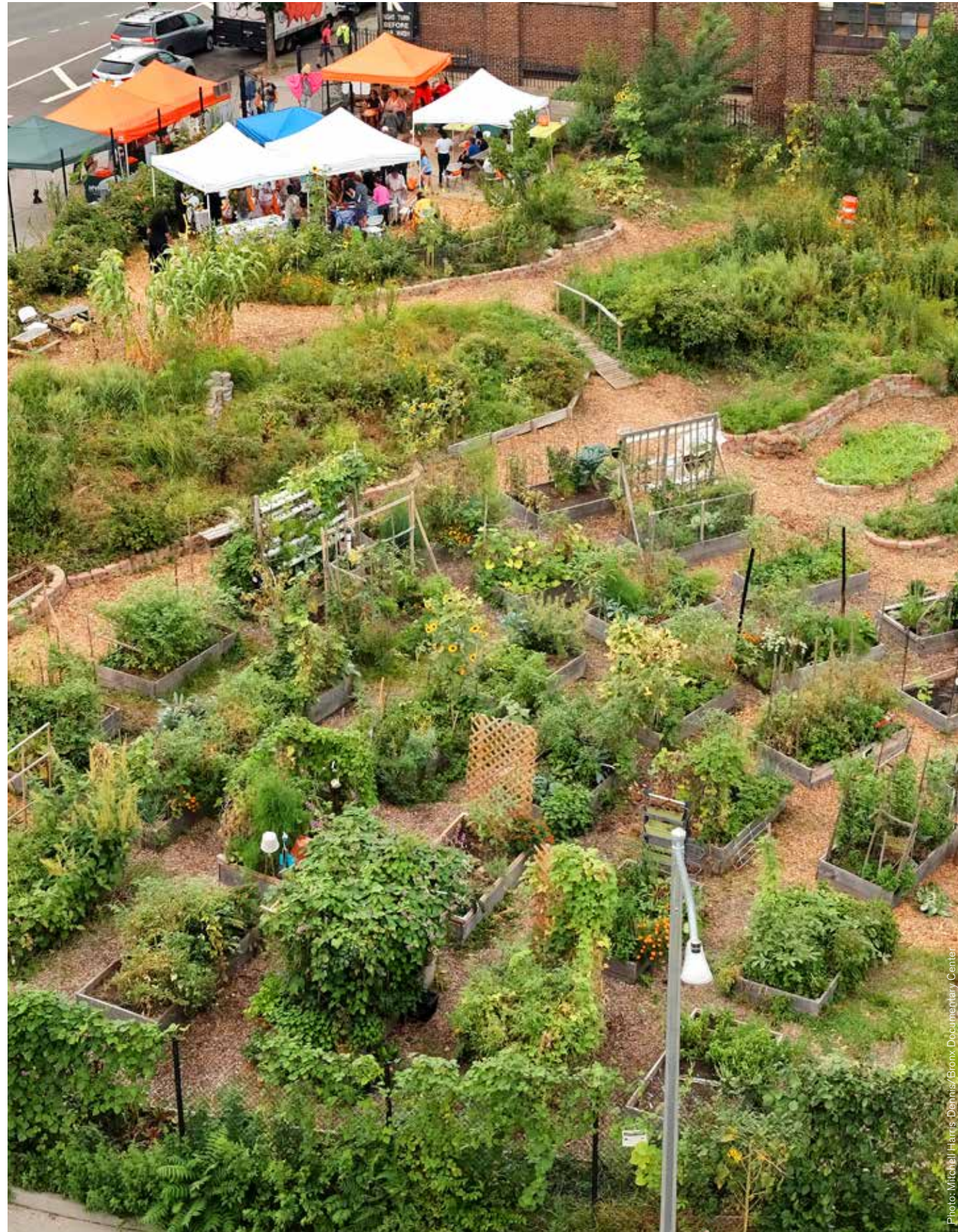


Photo: Mitchell Harris, Dennis/Brnx Documentary Center

Bronx Green-Up (BGU) is NYBG's signature horticultural outreach program, supporting residents to improve their communities through greening projects. Since its start 30 years ago, BGU has helped create more than 300 community, school gardens, and urban farms in the borough. Last year, BGU hosted 248 events, including 35 workshops, and provided assistance for 77 community gardens, schools, and greening partners, reaching 4,408 people. BGU and the New York City Compost Project hosted by The New York Botanical Garden organized 448 discrete workshops, tours, classes, and other public activities that served nearly 10,000 people. BGU continued to support efforts to grow Serrano peppers for Bronx Hot Sauce and partnered with the Mary Mitchell Center to successfully apply for a USDA grant that supports community efforts to develop a value-added food product. In addition, 532 community residents volunteered 1,596 hours in growing and harvesting produce in the borough's gardens and farms. Other highlights include:

Morris Campus Educational Farm: BGU led more than 20 workdays with students and volunteers at the Morris Campus Educational Farm, which serves four high schools on the Morris Campus, and conducted the Training of Trainers program to extend its impact to the larger community. This program provides high school students with stipend-based opportunities to develop skills in organic gardening, healthy eating, food preservation, leadership, facilitation, and community building. This year, BGU will work with the West Side High School, as they seek to replicate this successful model educational farm in Newark, New Jersey.

Walton Family Health Center Rooftop Garden: A graduate of BGU's Grow More Vegetables Certificate Series in winter 2018 and a colleague created a small rooftop vegetable and herb growing area at their clinic, Walton Family Health Center. BGU assisted with planning layouts of the beds, provided materials needed for the beds and planters, and led the workday build in June for clinic staff and volunteers.

NYC Parks Green Thumb: In partnership with Green Thumb, BGU provided seven workshops for community gardeners on Fruit Tree Pruning and Direct Sow and Transplant. BGU teamed up with the organization on the popular annual Harvest Festival and Native Plant Giveaways.



Photo: Tony Bazan, Garcia/Brnx Documentary Center





NYBG is one of the world's great research institutions dedicated to plant science and conservation, with 100 Ph.D. scientists and their collaborators, exploring, understanding, documenting, conserving, and managing biological diversity in 49 countries. Their efforts have helped to protect some of the most threatened floras in the world, and have advanced forestry management practices and capacity building in countries with the most biologically diverse and endangered habitats. Six Areas of Botanical Concern (ABCs) include North America, the Caribbean, Southeast Asia, the Pacific Islands, the Atlantic Coastal Forest of Brazil, and Amazonia.



With Earth's life support systems in crisis through biodiversity loss, ecosystem degradation, and forest destruction, all worsened by climate change, NYBG's efforts to apply sound plant science toward ecosystem conservation are more important than ever. Our scientists have been instrumental in conserving the most biologically diverse and endangered ecosystems on the planet. Fiscal year highlights include:

The Amazon: Douglas Daly, Ph.D., B.A. Krukoff Curator of Amazonian Botany and Director of the Institute of Systematic Botany, works at the epicenter of forest degradation and fires in the Amazon, in Rondônia, Brazil, implementing a new strategy for sustainable forest management focused on training traditional community members. In September 2019, he led a training program with students from the University of Rondônia and local citizens. In April 2019, he led the first of two planned courses in the Chandless State Park in the state of Acre, with 19 participants. His approach establishes community members as stakeholders in Amazon-protected areas, ensuring that local communities benefit from sustainable forest management, in terms of livelihoods, ecosystem services, and forest resources. More training is planned throughout the Amazon Basin.

Southwestern Pacific: The Vanuatu archipelago in the Southwestern Pacific is a global priority for biodiversity conservation due to its high rate of biotic endemism, the endangerment of its native flora and fauna, and the alarming erosion of traditional knowledge and cultural practices based in this biodiversity. Little is known about Vanuatu's plant diversity and the traditional uses of its plants, which are threatened by rising sea waters. NYBG scientists are collaborating in environmental and biocultural conservation projects with traditional leaders, local communities, and government agencies in Vanuatu to document plant use and diversity. To date, more than 2,800 plant collections have been made, including 459 collections last year.

New York City: In August 2018, NYBG's Center for Conservation Strategy published *State of New York City's Plants 2018*, the first of an annual overview of the status of New York City's plant species, both native and non-native, in the five boroughs. The report found 2,029 reported plant species in New York City from 1807 to 2018. This was due to the success of the *New York City EcoFlora Project*, which engaged over 1,000 New Yorkers in observing plants and animals citywide using the iNaturalist application on their phones, recording more than 250,000 observations. With major support from an Institute for Museum and Library Services' National Leadership Grant, NYBG will now scale up the *EcoFlora* project by expanding it to four other botanical gardens—Chicago Botanic Garden, Denver Botanical Gardens, Desert Botanical Garden, and Marie Selby Botanical Garden—who will implement the model in their communities. The project will have a major impact in engaging communities in the study and conservation of their local environment.

Northeastern United States: The Northeastern United States is a priority for conservation because of its rich diversity of species, and, unfortunately, its high rate of endangerment from causes such as habitat loss, invasive species, pollution, and climate change. Robert Naczi, Ph.D., Arthur J. Cronquist Curator of North American Botany, is compiling data and analyses on these species for the *New Manual of Vascular Plants of Northeastern United States and Adjacent Canada*, an updated floristic guide. It will cover 139 national wildlife refuges and 18 national forests, national recreation areas, national tallgrass prairies, and estuarine areas, providing new tools for plant identification for about 5,300 species.

FINANCIAL REPORT



Revenue & Expenses

Fiscal Year 2019, which ended on June 30, 2019, marked the 31st consecutive year that The New York Botanical Garden has balanced its operating budget. This report provides a summary of revenue and expense on a cash basis and balance sheet results.

In aggregate, revenue totaled \$79,629,000, decreasing by 5.7% from FY 2018. Private fundraising and government support were relatively flat, year over year. The decrease came from earned income when compared to FY 2018, which was a blockbuster year with our *CHIHULY* exhibition. The drop in earned income was planned for during the course of FY 2019.

Visitor-based revenue in FY 2019 was driven by *Georgia O'Keeffe: Visions of Hawai'i*, the *Holiday Train Show*, *The Orchid Show*, and *Brazilian Modern: The Living Art of Roberto Burle Marx*. Attendance reached over 1,000,000 visitors; earned income grossed nearly \$28,500,000 or 36% of gross revenue, and the total number of memberships was 56,774.

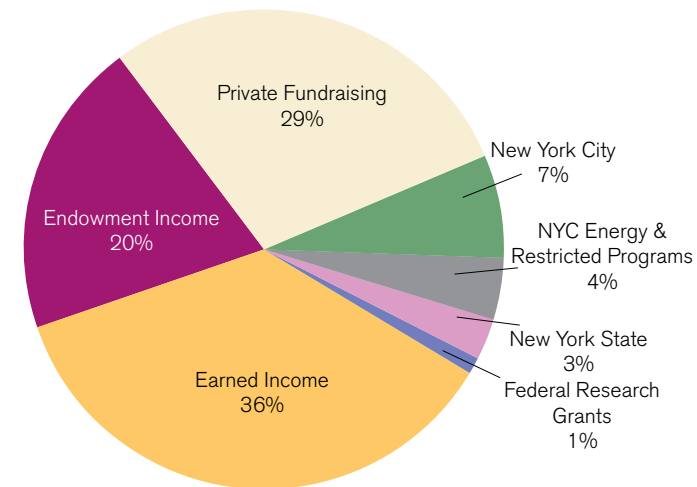
The market value of the Consolidated Endowment Portfolio grew from \$336,631,000 to \$351,830,000, as a result of contributions, withdrawals, and a 5.88% fiscal year investment return net of fees. The endowment draw totaled \$15,775,000, which was an effective spending rate of 5.15% of the beginning balance, down from the previous year.

Government support saw improvements at the City level. City Council member items increased. State funding through the Zoos, Botanical Gardens, and Aquaria program, and funding for research grants awarded by the Federal National Science Foundation remained relatively flat.

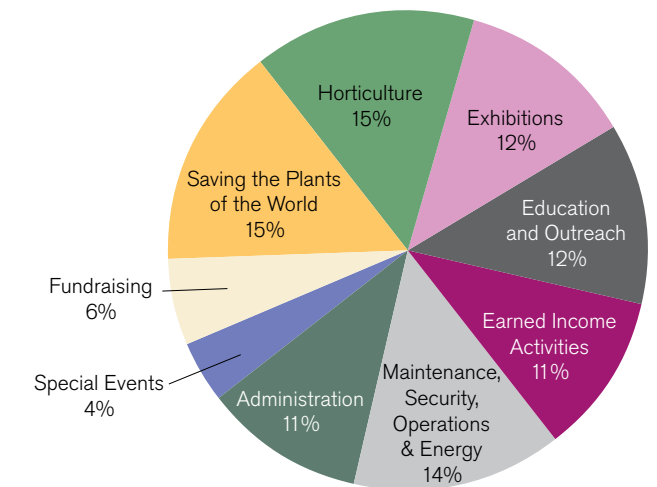
In aggregate, expenses totaled \$79,545,000, decreasing by 5.7% over the previous year. This drop was planned to balance anticipated revenue. The mix of expenses remained relatively constant with approximately 79% going toward programs and public services and 21% toward administration and fundraising.

Finally, in August 2019, Standard & Poor's affirmed the Garden's credit rating of A+ stable, citing the Garden's solid financial resources, strong fundraising capabilities, steady membership, and increasing attendance.

Fiscal Year 2019 Revenue \$79.6 Million



Fiscal Year 2019 Expenses \$79.5 Million



Net Assets

Net assets represent all assets less all liabilities. Net assets include the total book value of land, buildings, and equipment constructed or purchased by the Garden net of accumulated depreciation and debt, as well as endowment funds and other long-term investments. In FY 2019, the net assets of The New York Botanical Garden grew by \$2,463,000 from \$528,430,000 to \$530,893,000, due to favorable investment returns and strong fundraising results for the year.

The Board and the management staff of the Garden, as fiduciary stewards of these assets, understand that responsible financial management is a critical obligation to the institution and its donors. The Garden's President and CEO, the Director of the Garden, the Chief Financial Officer, and the Controller are responsible for maintaining internal control over financial reporting for the Garden and have designed and instituted such internal controls to provide reasonable assurance that financial reporting is accurate and reliable. Finally, this report was prepared near the end of the annual audit process, and as such, is still subject to change until the audit is completed.

We thank Treasurer Craig Vosburg and the members of the Finance, Audit, and Investment Committees and their respective Chairs: John Thain, Florence Davis, and John Bernstein. Their hard work and commitment have been key to the success of the Garden.

J. Barclay Collins II
Chairman of the Board

J.V. Cossaboom
Director of the Garden

Sarah A. Gillman
Chief Financial Officer



Board of Trustees

As of June 30, 2019

Chairman

J. Barclay Collins II

CEO & The William C. Steere Sr. President

Carrie Rebora Barratt, Ph.D.

Senior Vice Chairman

Lionel Goldfrank III

Secretary

Dianne T. Renwick

Treasurer

Craig Vosburg

Vice Chairmen

Edward P. Bass

Larry E. Condon

Amy Goldman Fowler, Ph.D.

Marjorie G. Rosen

Mrs. Nicholas J. Sakellariadis

William C. Steere, Jr.

Shelby White

Chairmen Emeriti

Maureen K. Chilton

Wilson Nolen

Executive Committee

J. Barclay Collins II, *Chairman*

Carrie Rebora Barratt, Ph.D., *Ex Officio*

Edward P. Bass

John W. Bernstein

Mrs. Coleman P. Burke

Maureen K. Chilton, *Ex Officio*

Larry E. Condon

Amy Goldman Fowler, Ph.D.

Lionel Goldfrank III

Diane Katzin

Wilson Nolen, *Ex Officio*

Dianne T. Renwick

Marjorie G. Rosen

Deborah Goodrich Royce

Mrs. Nicholas J. Sakellariadis

William C. Steere, Jr.

Carmen M. Thain

Craig Vosburg, *Ex Officio*

Caroline A. Wamsler, Ph.D.

Shelby White

Trustees

Leonard Abess

Robert A. Bartlett, Jr.

Anne H. Bass

Gary A. Beller

Mrs. Jeremy H. Biggs

Mrs. Harry Burn III

Mrs. Jonathan C. Clay

Naeem Crawford-Muhammad

Mary McDonnell Davidson

Florence A. Davis

Jacqueline H. Dryfoos

Mrs. Edith B. Everett

Robert F. Gossett, Jr.

Weslie R. Janeway

Henry P. Johnson

Jill Joyce

Karen Katen

Thomas E. Lovejoy, Ph.D.

Susan E. Lynch

Susan E. Kay Matelich

Gilbert C. Maurer

Lynden B. Miller

George M. Milne, Jr., Ph.D.

Hidemoto Mizuhara

Janet M. Montag

Malcolm C. Nolen

Jessye Norman

Susan R. Palm

Marc B. Porter

Mrs. John R. Robinson

Mrs. Arthur Ross

Gillian Steel

Michael H. Steinhardt

Sally Susman

John A. Thain

Douglas Dockery Thomas

Joseph A. Thompson

Mish Tworkowski

Gordon A. Uehling III

Karen Washington

Sigourney Weaver

Michael A. Zarcone

Life Trustees

Mrs. Thomas J. Hubbard

Kenneth Roman

Trustee Emerita

Mrs. Thomas H. Choate

President Emeritus

Gregory Long

Distinguished Counsellors to the Board

Gloria M. Coruzzi, Ph.D.

Sir Peter R. Crane, FRS

Helen Dillon

Rafaela Campostrini Forzza, Ph.D.

Vartan Gregorian, Ph.D.

Penelope Hobhouse, Hon.D.Litt. VMH

Joseph M. McShane, S.J.

Laurie D. Olin, FASLA

Professor Sir Ghillean Prance, FRS, VMH

Quentin D. Wheeler, Ph.D.

Edward O. Wilson, Ph.D.

Ex Officio

Hon. Richard A. Carranza

Hon. Bill de Blasio

Hon. Ruben Diaz Jr.

Hon. Tom Finkelpearl

Hon. Corey Johnson

Hon. Mitchell Silver

Hon. Scott M. Stringer

Board of Advisors

R. Ellen Avellino

Cynthia D. Brodsky

Susan Cohen

Elizabeth B. Dater

Patricia Fast

Aramina Vega Ferrer, Ph.D.

Mrs. Robert C. Graham, Jr.

Carla Hall

Mai Hallingby Harrison

Mrs. Charles B. Johnson

Alexandra Lebenthal

Lawrence Lederman

Peter R. McQuillan

Gillian Minitier

Nicholas J. Sakellariadis

Kate Solomon

Mrs. B. Robert Williamson, Jr.

Committees of the Board and Corporation

As of June 30, 2019

J. Barclay Collins II, in his capacity as Chairman, is an ex officio member of all committees.

Carrie Reborra Barratt, Ph.D., in her capacity as President, is an ex officio member of all committees except the Audit Committee.

Wilson Nolen and Maureen K. Chilton, in their capacity as Chairmen Emeriti, are ex officio members of all committees.

Craig Vosburg, in his capacity as Treasurer, is an ex officio member of the Executive, Budget, and Investment Committees.

Executive Committee

J. Barclay Collins II
Chairman

Edward P. Bass
John W. Bernstein
Mrs. Coleman P. Burke
Larry E. Condon
Amy Goldman Fowler, Ph.D.
Lionel Goldfrank III
Diane Katzin
Dianne T. Renwick
Marjorie G. Rosen
Deborah Goodrich Royce
Mrs. Nicholas J. Sakellariadis
William C. Steere, Jr.
Carmen M. Thain
Caroline A. Wamsler, Ph.D.
Shelby White

Audit Committee

Florence A. Davis
Chairman
Gilbert C. Maurer
Honorary Chairman

Gary A. Beller
Lionel Goldfrank III
Robert F. Gossett, Jr.
Henry P. Johnson
Craig Vosburg

Finance Committee

John A. Thain
Chairman

Gary A. Beller
Mrs. Coleman P. Burke
Lionel Goldfrank III
Diane Katzin
Susan E. Kay Matelich
Malcolm C. Nolen
Mrs. Nicholas J. Sakellariadis

Investment Committee

John W. Bernstein
Chairman

Suzanne Brenner, *Advisor*
Lionel Goldfrank III
Robert F. Gossett, Jr.
Henry P. Johnson
George E. Matelich, *Advisor*
Malcolm C. Nolen

Nominating and Governance Committee

Caroline A. Wamsler, Ph.D.
Chairman

Mrs. Jeremy H. Biggs
Mrs. Jonathan C. Clay
Larry E. Condon
Amy Goldman Fowler, Ph.D.
Henry P. Johnson
Jill Joyce
Edith W. Kean
Susan E. Lynch
Kenneth Roman
Deborah Goodrich Royce
Carmen M. Thain

Education Committee

Caroline A. Wamsler, Ph.D.
Chairman
Mrs. Edith B. Everett
Mrs. Andrew Heiskell
Mrs. Nicholas J. Sakellariadis
Honorary Chairmen

Ashley Abess
R. Ellen Avellino
Kim Bendheim
Cynthia D. Brodsky
Mrs. Jonathan C. Clay
Jacqueline H. Dryfoos
Aramina Vega Ferrer, Ph.D.
Amy Goldman Fowler, Ph.D.
Charlotte Frank, Ph.D.
Emma and Todd Goergen
Carla Hall
Jill Joyce
Diane Katzin
Edith W. Kean
Lynden B. Miller
Susan R. Palm
Mrs. Jean Putzer
Jill and Alan Rappaport
Dianne T. Renwick
Karen L. Rosa
Pola Rosen, Ed.D.
Deborah Goodrich Royce
Joanna B. Schulman
Sara Lee Schupf
Kate Solomon
Beth Taylor
Karen Washington
Mrs. B. Robert Williamson, Jr.

Horticulture Committee

Marjorie G. Rosen
Chairman

R. Ellen Avellino
Anne H. Bass
Walter S. Bopp
Allison K. Bourke
Cynthia D. Brodsky
Alice Cary Brown
Mrs. Coleman P. Burke
Mrs. Harry Burn III
Ernest J. Cavallo

Patrick Chassé
Mrs. Jonathan C. Clay
Susan Cohen
Kristina G. Durr
Andrea H. Fahnestock
Amy Goldman Fowler, Ph.D.
Charlotte M. Frieze
Lionel Goldfrank III
Mrs. Thomas J. Hubbard
Henry P. Johnson
Diane Katzin
Edith W. Kean
Memrie M. Lewis
Peter R. McQuillan
Polly Espy Millard
Lynden B. Miller
Janet M. Montag
Katie Ridder Pennoyer
Barbara Paul Robinson
Mrs. John R. Robinson
Mrs. Arthur Ross
Deborah Goodrich Royce
Gillian Steel
Eleanor F. Sullivan
Tina Swartz
Carmen M. Thain
Douglas Dockery Thomas
Shavaun Towers
Mish Tworowski
Connie Vandenberg
John E. Vandenberg
Caroline A. Wamsler, Ph.D.
Bunny Williams

Plant Research and Conservation Advisory Council

George M. Milne, Jr., Ph.D.
Mrs. Nicholas J. Sakellariadis
Co-Chairmen
Edward P. Bass
Honorary Chairman

Jayne Abess
Leonard Abess
R. Ellen Avellino
Coleman P. Burke
Gilbert Butler
W. Russell Byers, Jr.
Larry E. Condon
Elizabeth B. Dater

Jacqueline H. Dryfoos
Cary Fowler, Ph.D.
Mrs. Andrew Heiskell
Mrs. Thomas J. Hubbard
Weslie R. Janeway
Jill Joyce
Diane Katzin
Edith W. Kean
Thomas E. Lovejoy, Ph.D.
Dan W. Lufkin
John D. Mitchell
Robert C. Quinlan
Mrs. Robert C. Quinlan
Mrs. John R. Robinson
Gillian Steel
William C. Steere, Jr.
Joan O'Meara Winant

Noel H. Holmgren, Ph.D.
Patricia K. Holmgren, Ph.D.
Professor Sir Ghilleen Prance, FRS, VMH
Edward O. Wilson, Ph.D.
Honorary Members

Ad Hoc and Corporation Committees

By-Laws Committee

John W. Bernstein
Florence A. Davis
Lionel Goldfrank III
Caroline A. Wamsler, Ph.D.

Development Committee

Carmen M. Thain
Chairman

Diane Katzin
Janet M. Montag
Deborah Goodrich Royce
Mish Tworowski

Diversity, Equity, and Inclusion Committee

Maureen K. Chilton
Dianne T. Renwick
Co-Chairmen

John Bernstein
Joseph Thompson
Caroline A. Wamsler, Ph.D.

Library Visiting Committee

John D. Mitchell
Chairman

R. Ellen Avellino
Anne H. Bass
Barry M. Bergdoll, Ph.D.
Mrs. Coleman P. Burke
Ernest J. Cavallo
Thomas A. Christopher
Leslie Rose Close
Fern D. Cohen
Larry E. Condon
Laura Delano
Mrs. Maurice M. Dwek
Elizabeth S. Eustis
Mrs. Henry C. Frick, Jr.
Jane Garmey
Mac K. Griswold
Zoe Ingalls
David Kohn, Ph.D.
Marsha Malinowski
Stephen C. Massey
Mrs. George M. Milne, Jr.
Therese O'Malley
Mrs. John R. Robinson
Barbara Paul Robinson
Mrs. Theodore C. Rogers
Eugene A. Sekulow, Ph.D.
Gillian Steel
Mrs. William C. Steere, Jr.
Caroline A. Wamsler, Ph.D.

Real Estate Committee

Lionel Goldfrank III
Robert F. Gossett, Jr.

Tulip Tree Allée Committee

Robert A. Bartlett, Jr.
Larry E. Condon
Mrs. Arthur Ross

Benefactors in Perpetuity

As of June 30, 2019

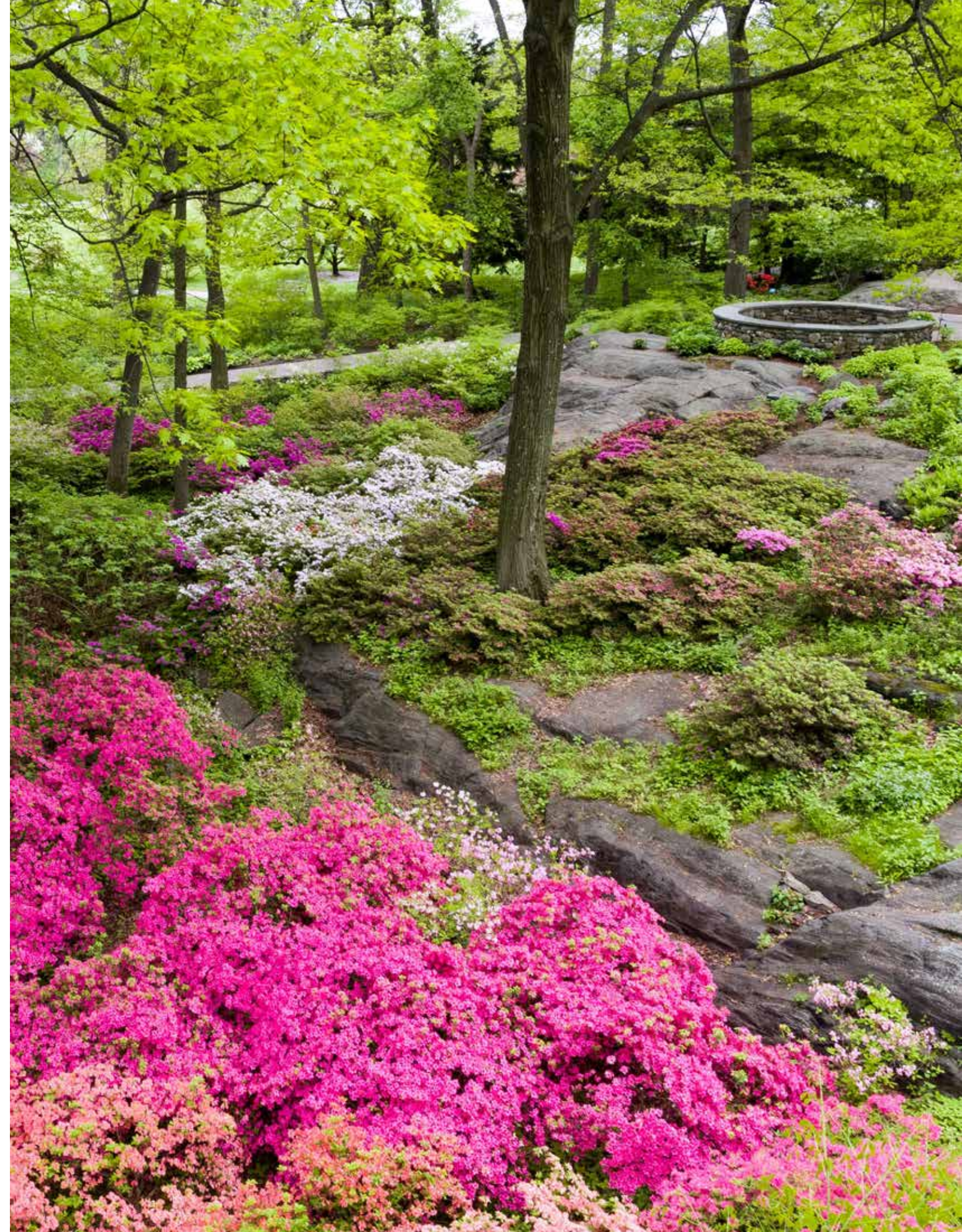
Founders

Addison Brown
Andrew Carnegie
Columbia College
D.O. Mills
J. Pierpont Morgan
John D. Rockefeller
Cornelius Vanderbilt

Benefactors in Perpetuity

Estate of Mrs. Russell Sage
John D. Rockefeller, Jr.
Avalon Foundation
Mr. and Mrs. David Rockefeller
James Foundation
Dr. Boris A. Krukoff
Harriet Barnes Pratt
Rockefeller Brothers Fund
Lila Acheson Wallace
The Thomas J. Watson Family
National Science Foundation
The Thomas J. Watson Foundation
National Institutes of Health
The Andrew W. Mellon Foundation
The City of New York
New York State Council on the Arts
Helen Watson Buckner
Enid A. Haupt
New York State Natural
Heritage Trust
Arthur and Janet Ross
The Vincent Astor Foundation
United States Department of
Education
Mrs. Arthur H. Sulzberger
Mrs. Thomas J. Watson, Jr.
Walter J. Johnson
Exxon Corporation
Mary Flagler Cary Charitable Trust
Edward P. Bass, Philecology Trust
Mr. and Mrs. James L. Ferguson
Estate of Dora A. Dennis
Lila Wallace – Reader's Digest Fund
Estate of Malcolm Smith
Pfizer Inc & The Pfizer Foundation
The Chase Manhattan Bank
LuEsther T. Mertz Charitable Trust
The John D. and Catherine T.
MacArthur Foundation
Mrs. Oakleigh L. Thorne
Mr. and Mrs. Patrick A. Gerschel
The Henry Luce Foundation, Inc.
The Rockefeller Foundation
The Horace W. Goldsmith Foundation
William Randolph Hearst Foundation
The Prospect Hill Foundation
Mrs. Andrew Heiskell
Dr. and Mrs. Karl M.F. Wamsler
Lewis B. and Dorothy Cullman
Cleveland H. Dodge Foundation, Inc.
The Ambrose Monell Foundation
Bristol-Myers Squibb Company and
Bristol-Myers Squibb Foundation,
Inc.
Mr. and Mrs. Wilson Nolen
Great Island Trust
Arthur M. and Olga T. Eisig –
Arthur M. and Kate Eisig Tode
Foundation, Inc.
Texaco Foundation
Mr. and Mrs. Donald B. Straus
The Bank of New York
The Kresge Foundation
Edith and Henry Everett
Mr. and Mrs. John R. Robinson
The Overbrook Foundation
Con Edison
MetLife Foundation
J.P. Morgan & Co., Incorporated
Estate of Margaret McGrath
Rockefeller
Philip Morris Companies Inc.
Altman Foundation
Mrs. Thomas H. Choate
Kenneth and Ellen Roman
Eleanor F. Sullivan
William D. Rondina and
The Carlisle Collection
The Starr Foundation
IBM Corporation
Mr. and Mrs. Thomas J. Hubbard
Harriet Ford Dickenson Foundation
The New York Times Company
Foundation, Inc.
United States Department of
Agriculture
Shelby White and Leon Levy
Charles Hayden Foundation
The Merck Company Foundation
Mr. and Mrs. William C. Steere, Jr.
Leon Lowenstein Foundation, Inc.
Victoria and Robert Zoellner
Mrs. Henry Loeb
Mr. and Mrs. James Benenson, Jr.
Compaq Computer Corporation
Mrs. Ewing W. Reilley
Estate of Adelaide Brevoort Ward
Mrs. Arnold Schwartz
Lionel Goldfrank III
Lillian Goldman Charitable Trust
Adam R. Rose and Peter R. McQuillan
Mr. and Mrs. Robert K. Steel
Mr. and Mrs. Richard L. Chilton, Jr.
The Louis Calder Foundation
Mr. and Mrs. Marvin H. Davidson
Institute of Museum and Library
Services
Vivian and Edward Merrin
Mr. and Mrs. Jeffrey A. Rosen
Gary A. and Carole P. Beller
The Peter Jay Sharp Foundation

JPMorgan Chase and the JPMorgan
Chase Foundation
The Scotts Miracle-Gro Company
Mr. and Mrs. Jonathan C. Clay
Estate of Arthur Ross
Mr. and Mrs. Nicholas J. Sakellariadis
Carmen and John Thain
Leon Levy Foundation
Amy P. Goldman
Pauline Gillespie and Robert Gossett
Mr. and Mrs. Harry Burn III
Karen Katen
Diane Katzin
Caroline A. Wamsler, Ph.D.
Estate of Harold Marcus
Stavros Niarchos Foundation
Bloomberg L.P.
Judy and Michael Steinhardt
Anne Cox Chambers
Weslie R. Janeway
Mr. and Mrs. Coleman P. Burke
National Endowment for the
Humanities
Mr. and Mrs. Charles M. Royce
Alfred P. Sloan Foundation
J. Barclay Collins II and
Kristina G. Durr



Permanent Endowments Valued at \$250,000 or More
As of June 30, 2019

Mary Trumbull Adams and Hugh Trumbull Adams Botanical Fund
The Helen Altschul Fragrance Garden Endowment Fund
Asian Economic Botany Fund
Azalea Garden Endowment
Edwin De T. and Louise Bechtel Fund
Benenson Ornamental Conifers Fund
Jason and Susanna Berger Fund
Nathaniel Lord Britton Memorial Fund
Bronx Green-Up Endowment
Peter M. Brown Memorial Fund
Helen Watson Buckner Endowment Fund
Burn Family Lilac Collection Endowment
Gilbert and Ildiko Butler Endowment for Collections Computerization
Mary Flagler Cary Endowment for Botanical Science
Children's Education Endowment
Children's Garden Fund
Cuban Research Program Endowment
Harriet Ford Dickenson Foundation Fund for Plant Research and Conservation
Maurice R. Greenberg Scholarship Fund
Enid A. Haupt Conservatory Fund
William Randolph Hearst Endowment Fund for Education and Outreach
Marian and Andrew Heiskell School Programs Fund
The Herb and Chemurgic Garden Endowment Fund
Dolores DeFina Hope Tree Peony Fund
Institute of Economic Botany Fund
Jane Watson Irwin Perennial Garden Endowment Fund
Jerome and Miriam Katzin Endowment for Seasonal Plantings
Leon Levy Visitor Center Endowment
Library Endowment Fund
The Louise and Henry Loeb School for Children's Gardening
Nancy Bryan Luce Herb Garden Endowment Fund
Bassett and Celia Maguire Library Fund
Matelich Anniversary Peony Collection Endowment
LuEsther T. Mertz Endowment Fund
LuEsther T. Mertz Plant Studies Center Fund
Microbiological Endowment Fund
Municipal Corporation Education Program Endowment Fund
Native Plant Garden Endowment Fund
Office of the President Endowment
Palm Family Edible Academy Technology Lab Endowment
The Philecology Plant Research and Conservation Fund
President's Fund Endowments in Honor of Gregory Long
Peggy Rockefeller Fund for the Rose Garden
Kenneth and Ellen Roman Fund for the Home Gardening Center
Marjorie G. Rosen Seasonal Walk Endowment
Arthur and Janet Ross Fund
Science Endowment
Sarah Davis Smith Memorial Orchid Collection Endowment
C.V. Starr Virtual Herbarium Endowment
The William and Lynda Steere Herbarium Endowment
Judy and Michael Steinhardt Maple Collection Endowment
Mr. and Mrs. Joseph R. Swan Endowment Fund
Thain Family Forest Endowment Fund
The Melissa Stutsman Topping Annual Plantings Endowment Fund
Vocational Education Coordination Endowment Fund
Lila Acheson Wallace Botany Endowment Fund
Honoré T. Wamsler Memorial Fund
Jeannette K. Watson Memorial Endowment Fund
Watson Science and Education Building Endowment Fund
The Rodney White Country Garden Endowment Fund

Endowed Chairs

Abess Curator of Tropical Botany
AP Farm Associate Vice President for Landscape Operations
Associate Vice President and Senior Curator for Outdoor Gardens
Rupert Barneby Curator of Botanical Science
The Elizabeth G. Britton Curator of Botany
Nathaniel Lord Britton Curatorship in Botany
Mary Flagler Cary Curatorships for Botanical Science (2)
The Alfred H. Caspary Curatorship
Chief Sustainability Officer and Vice President for Operations
Arthur J. Cronquist Curator of North American Botany
The Lewis B. and Dorothy Cullman Curator of Molecular Systematics Studies
The Lewis B. and Dorothy Cullman Curator of Plant Genomics
Marian S. Heiskell School and Family Programs Specialist
Patricia K. Holmgren Director of the William and Lynda Steere Herbarium
Thomas J. Hubbard Vice President and Director of the LuEsther T. Mertz Library
B.A. Krukoff Curator of Amazonian Botany
Gregory Long Director of the Edible Academy and
Ruth Rea Howell Family Garden
Susan E. Lynch Director of Graduate Studies and
Associate Vice President for Science Administration
Bassett Maguire Curator of Botany
Vivian and Edward Merrin Vice President for Glasshouses and Exhibitions
Mertz Collections Development/Technical Services Librarian
Mertz Conservation Librarian/Conservator
Stavros Niarchos Foundation Vice President for Children's Education
William B. O'Connor Curator of Special Collections, Research, and Archives
The Matthew Calbraith Perry Curatorship in Economic Botany
The Pfizer Curator of Botany
The Philecology Curatorship in Economic Botany
Peggy Rockefeller Rose Garden Curator
Marjorie G. Rosen Manager of Outdoor Gardens
Arthur Ross Vice President for Horticulture and Living Collections
The William C. Steere Sr. President
Thain Curator of Woody Plants
Thain Family Forest Director
The Kate E. Tode Curator of Botany



Special Events Leadership

July 1, 2018–June 30, 2019

Rose Garden Dinner

September 26, 2018

Honoree

Marjorie G. Rosen

Dinner Chairs

Maureen and Richard Chilton
Amy Goldman Fowler and Cary Fowler
Diane Katzin and Rick Kurnit
Adam R. Rose and Peter R. McQuillan
Jeffrey A. Rosen
Mish Tworkowski and Joseph Singer
Caroline A. Wamsler, Ph.D.
and DeWayne N. Phillips

Holiday Train Show® Family Benefit

November 28, 2018

Benefit Chairs

Ashley and Andrew Burr
Cristina and Christopher Cuomo
Elizabeth and Chris Davis
Emma and Todd Goergen
Lindsay and Spencer Grimes
Gillian Hearst
Kristy and Jonathan Korngold
Jennifer and Beau Lescott
Kamie and Richard Lightburn
Allison and Roberto Mignone
Alexandra Steel Scott and James Scott
Kate Solomon and David Wasserman
Julia and Ted Weld

Honorary Chair

Jill Joyce

Grandparent Chairs

Sandra Hughes
Carmen and John Thain

Winter Wonderland Ball

December 14, 2018

Gala Chairs

Alex Assouline
Georgina Bloomberg
Natalie Bloomingdale
Peter Brant Jr.
Sarah Chilton
Martin Dawson
Anne Hathaway
Gillian Hearst
Hilary Rhoda
Ariana Rockefeller

Vice Chairs

Savannah Engel
Kerry Joyce
Serena Marron
Nicole Meyers
Laurence Milstein
Alexandra Porter
Zack Thain
Timo Weiland

The Orchid Dinner

February 6, 2019

Gala Chairs

Vera Aryeh and Bob Gossett
Sharon and Bill Jacob
Susan and George Matelich

Chair

Steele Marcoux
Editor-in-Chief, VERANDA

Honorary Chairs

Jennifer and Malcolm Nolen
Tina and Steven R. Swartz
Elaine and Donald Textor

Garden Furniture and Antiques Fair Preview Party & Collectors' Plant Sale

April 11, 2019

Honorary Chairmen

Mrs. Coleman P. Burke
Barbara Israel
Stephen Orr
Barbara Cirkva Schumacher
Mish Tworkowski

Chairmen

Mr. and Mrs. Robert A. Bartlett, Jr.
Ann Marie Gardner
Katie Ridder Pennoyer
Emma Jane Pilkington

Collectors' Plant Sale Chairmen

Peter R. McQuillan
Marjorie G. Rosen
Joseph Singer

Conservatory Ball

June 6, 2019

Honoree

Maureen K. Chilton

Gala Chairmen

Sasha C. Bass
Eaddo Kiernan
Alexandra Lebenthal
Gillian Minter
Claire O'Grady
Deborah Goodrich Royce
Gillian Steel
Caroline Williamson

Honorary Chairmen

Friederike Kemp Biggs
Mary McDonnell Davidson
Patti Fast
Cosby George
Julie Graham

Journal Chairman

Kate Davis



Perennial Society
As of June 30, 2019

Dr. Salvatore V. Ambrosino	Fran Lawlor
Mrs. Donald F. Argy	Wendy Kassel Lewison
Brooke M. Beebe	Catherine Lomuscio
Mary F. Begrisch-Hory	Gregory Long
Gary A. and Carole P. Beller	Margro R. Long
Nora R. Benoliel	Kent and Eleanor Martin
Joan Benson	Perry and Samuel M. Matsa
Dorothy Black	Margrit Meagher
Laura B. Blau	Lynne Mellersten
Toby Nona Bloomfield	Dina C. Millard
Dorothy A. Borg	Erika M. Miller
Walter Bramkamp	Margaret M. Murphy
Mrs. Donald J. Bruckmann	Mr. and Mrs. Wilson Nolen
William R. Buck, Ph.D.	Jane E. Ondovcsik
Mrs. Mildred Carroll	Paul and Martha Parvis
Leone E. Caspler	Janet M. and Robert J. Pawluk
Ernest J. Cavallo	Robert Pichette and Mary Falcone
Hon. Anne Cox Chambers	Kenneth and Ellen Roman
Mrs. Thomas H. Choate	Dorrie and Sigmund Rosen
Connie Cohen	Lucile P. Ross
Mr. and Mrs. Richard Cooperman	Ravi Rozdon Living Trust
James and Carol DiLorenzo	Nancy Ruffner
Barbara Donnelly Eich	Philip R. and Karen M. Russo
Dr. Joan Eliasoph	Edward Sandrow
Kevin P. Feerick	Rena Wynne Schilsky
Joan M. Felder	Nancy Schloss
Stephanie Fogel	Barbara E. Schneider
Iris Friedlander	Phyllis and Howard Schwartz
JoAnn Fuqua	Philanthropic Trust
Burt Gitlin	Sue and Gene Sekulow
Mr. and Mrs. Lionel Goldfrank III	Dorothy J. Selinger and
Robert F. Gossett, Jr.	L. Michael Moskovis
Laurie Greenly	Florence Seyffert and
Thomas Groarke	Kenneth Russell
Anthony A. Guido	Sally Shore-Wittenberg
Lynne Hansen	Caroline and David Silverstone
Anneliese Harstick	Laura Sprengelmeyer
Mrs. Andrew Heiskell	Mr. and Mrs. William C. Steere, Jr.
Eileen Herbert	Nancy Stein and Edward McDermott
Arlynn and Harvey Hilton	Marcia Streaun
Denene Hisgen	Cynthia Sumner
Drs. Patricia K. and Noel H. Holmgren	Audrey J. Sutton
Mr. and Mrs. Thomas J. Hubbard	Arne Svenson
Mr. and Mrs. Joseph Jelisavcic	Edith F. Unger
Diane and Jeffrey Jennings	Carol A. Walker
Jill Joyce	Marshall Weinberg
Brenda Kamen	Lucille Werlinich
Mrs. Hamilton F. Kean	Shelby White
Linda Keating	George Yourke
Fred and Whitney Keen	Anonymous (42)
Irene Capp Kerr and Donald E. Kerr	
James W. Kinnear	
Dorothy J. Lander	



Exhibition Donors

July 1, 2018–June 30, 2019

Kiku: Spotlight on Tradition

Presenting Sponsor

 Mitsubishi Corporation (Americas)

Additional support provided by the J.C.C. Fund of the Japanese Chamber of Commerce and Industry of New York, Hitachi America Ltd., Marubeni America Corporation, and Sumitomo Corporation of the Americas Foundation

Holiday Train Show®

Founding Sponsors

VICTORIA and ROBERT ZOELLNER

Sponsors

 Alpine Associates
Management Inc.

Mr. and Mrs. Coleman P. Burke

**LuEsther T. Mertz
Charitable Trust**

**GRAND
HYATT**
NEW YORK

 ★ macy's

The Orchid Show: Singapore

Sponsors

Mr. and Mrs. Charles M. Royce

LuEsther T. Mertz Charitable Trust

 citi

Supported by

 **SG SINGAPORE**
Passion Made Possible

Exhibitions in the Enid A. Haupt Conservatory
are made possible by the Estate of Enid A. Haupt.

Brazilian Modern: The Living Art of Roberto Burle Marx

**LuEsther T. Mertz
Charitable Trust**

Mobile Media supported by
**Bloomberg
Philanthropies**

J. Barclay Collins II

**Estate of
Enid A. Haupt**

Jill Joyce

**Melville
Foundation**

 **MetLife**
Foundation

Tom and Janet Montag

 **NATIONAL ENDOWMENT FOR THE
HUMANITIES**

 natura

Mrs. Arthur Ross

Carmen and John Thain

**Shelby White and the
Leon Levy Foundation**

Additional support is provided by

**Milton and Sally
Avery Arts Foundation**

**The Kurt Berliner
Foundation**

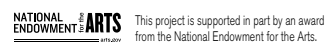
 **BRAZIL**
NEW YORK

E.H.A. Foundation, Inc.

**Anna-Maria and Stephen
Kellen Foundation**

Susan E. Lynch

Mr. and Mrs. Charles M. Royce

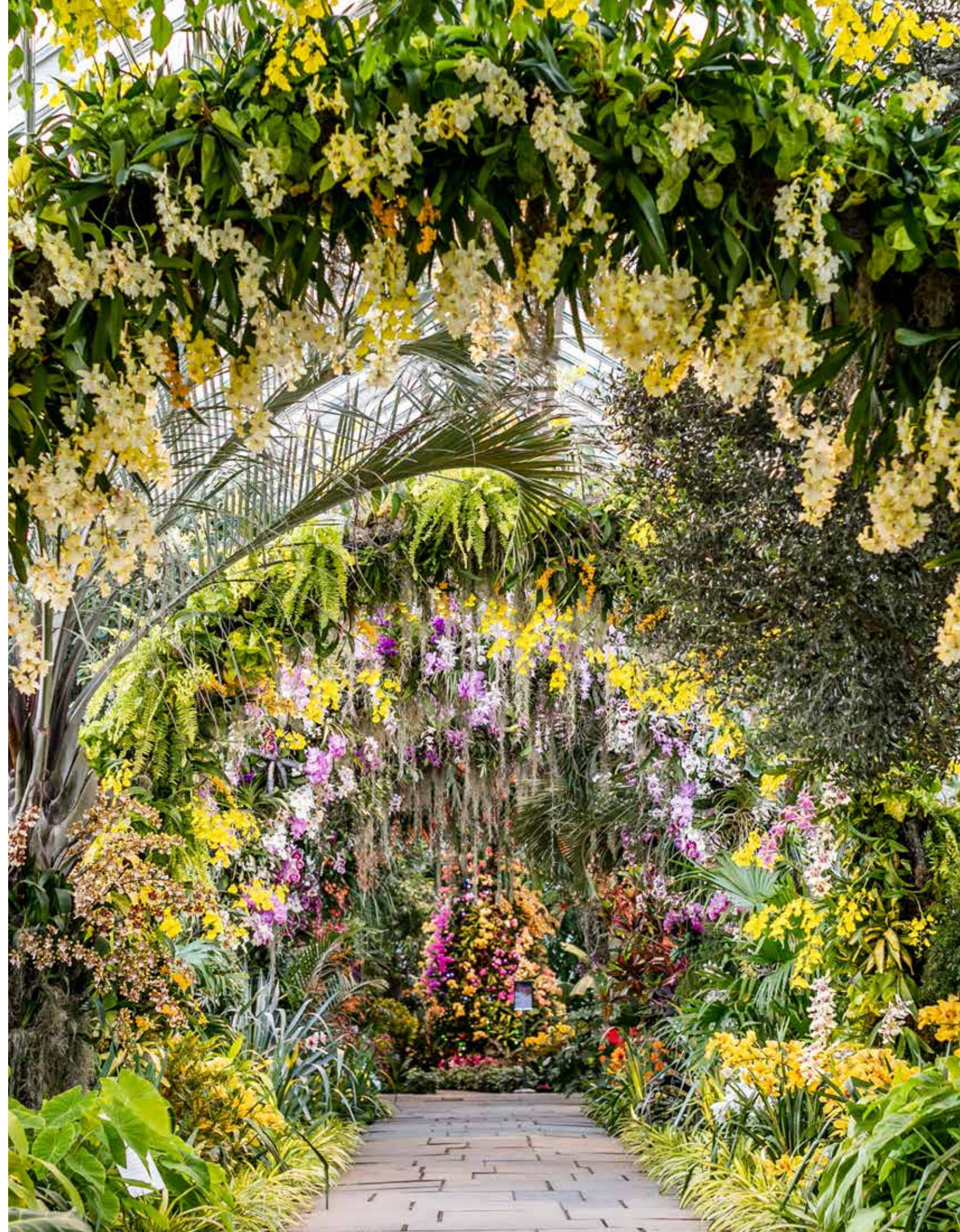
 **NATIONAL ENDOWMENT FOR THE
ARTS** This project is supported in part by an award
from the National Endowment for the Arts.

 **NEW YORK
STATE COUNCIL ON THE
ARTS**

New York State Council on the Arts with the support of
Governor Andrew M. Cuomo and the New York State Legislature

Support for the Art Gallery Exhibition is provided by Benjamin and Beth Hesse

Any views, findings, conclusions, or recommendations expressed in this exhibition do not necessarily represent those of the National Endowment for the Humanities.



How You Can Make a Difference

The New York Botanical Garden is an iconic living museum. An oasis in this busy metropolis since its founding in 1891, the Garden is a dynamic, leading New York City cultural institution. A National Historic Landmark, the 250-acre site's verdant landscape supports over one million living plants in extensive collections. More than one million annual visitors enjoy the Garden, not only for its remarkable diversity of tropical, temperate, and desert flora but also for programming that ranges from renowned exhibitions in the Enid A. Haupt Conservatory and LuEsther T. Mertz Library to celebrations on Daffodil Hill.

The Garden is also a major educational institution. More than 300,000 people annually—among them Bronx families, schoolchildren, and teachers—learn about plant science, ecology, and healthful eating through NYBG's hands-on, curriculum-based programming; 90,000 of those visitors are children from underserved neighboring communities, while more than 3,000 are educators from New York City's public school system participating in professional development programs that train them to teach science courses at all grade levels.

NYBG operates one of the world's largest plant research and conservation programs, with 200 staff members—including nearly 100 Ph.D. scientists—working in the Garden's state-of-the-art molecular labs as well as in the field, where they lead programs in 49 countries.

There are numerous ways in which you can help NYBG continue to flourish:

- A gift to the **Annual Fund** provides essential support for all of NYBG's programs in horticulture, education, and plant research and conservation. Gifts of \$25,000 or more are recognized through our President's Circle. To make a contribution, or for more information, please contact J. Tim Landi at 718.817.8555 or tlandi@nybg.org
- Join the **Garden Patrons Program** by making a tax-deductible gift of \$1,500 or more. In addition to Member benefits, Patrons receive invitations to exclusive lectures featuring scientists, world-renowned horticulturists, and landscape designers, as well as special viewings of exhibitions. For more information, please call 718.817.8553 or e-mail gardenpatrons@nybg.org
- Become a **Member** and enjoy benefits that include free admission, guest passes, parking passes, and discounts at the NYBG Shop and on extensive education programs. Please contact Melanie Patterson at 718.817.8725 or mpatterson@nybg.org
- Include the Garden in your estate plans and become a member of the **Perennial Society**. Bequests and other planned gifts support the Garden's endowment and provide critical funding for the Garden's future. Members of the Perennial Society receive invitations to events, lectures, and an annual luncheon. Please contact Lisa Sifre at 718.817.8545 or lsifre@nybg.org
- Double or triple your contribution with a **Corporate Matching Gift**. Many businesses provide matching funds to augment your support. Please contact your company's human resources department to find out if your company participates.

Learn more at nybg.org



NYC Cultural Affairs The New York Botanical Garden is located on property owned in full by the City of New York, and its operation is made possible in part by public funds provided through the New York City Department of Cultural Affairs. A portion of the Garden's general operating funds is provided by The New York City Council and The New York State Office of Parks, Recreation and Historic Preservation. The Bronx Borough President and Bronx elected representatives in the City Council and State Legislature provide leadership funding.

NEW YORK BOTANICAL GARDEN

2900 Southern Boulevard • Bronx, NY 10458-5126 • 718.817.8700 • nybg.org