

EDUCATION COMMITTEE MEETING

November 14, 2025

NEW YORK BOTANICAL GARDEN



WELCOME

Kate Solomon
Chair of the Education Committee



OPENING REMARKS

Jennifer Bernstein
CEO & The William C. Steere Sr President



VICE PRESIDENT'S UPDATE

Jamie Boyer, PhD
Stavros Niarchos Foundation Vice President for Education



Treetop Walk

- Opened October 21, 2025
- Attendance: ~1,000 visitors per day
- Since reopening, 40-50% of NYBG ticket-holders have visited ECAG



Children's Education Attendance FY25

- Record year for attendance in all programs
- Educated more than 400,000 visitors! (35% increase)
- 75,000 school students in onsite workshops (8% increase)
- 5,000 teachers in professional learning programs (30% increase)



School of Professional Horticulture

- Expanding the SoPH program for 2026
- 26 students applied this year
- 15 students have been accepted for the Class of 2028
- The Edible Academy will become a *new* hands-on rotation site for students
- SoPH is adding more ecological restoration work for the students' experience



Continuing Education Partnerships

- Parks Opportunity Partnership
- Urban Tree Care with NYC Parks
- Department of Environmental Protection
- Fordham University



OUTDOOR LEARNING & EARLY EDUCATION

Jamie Boyer, PhD
Stavros Niarchos Foundation Vice President
for Education

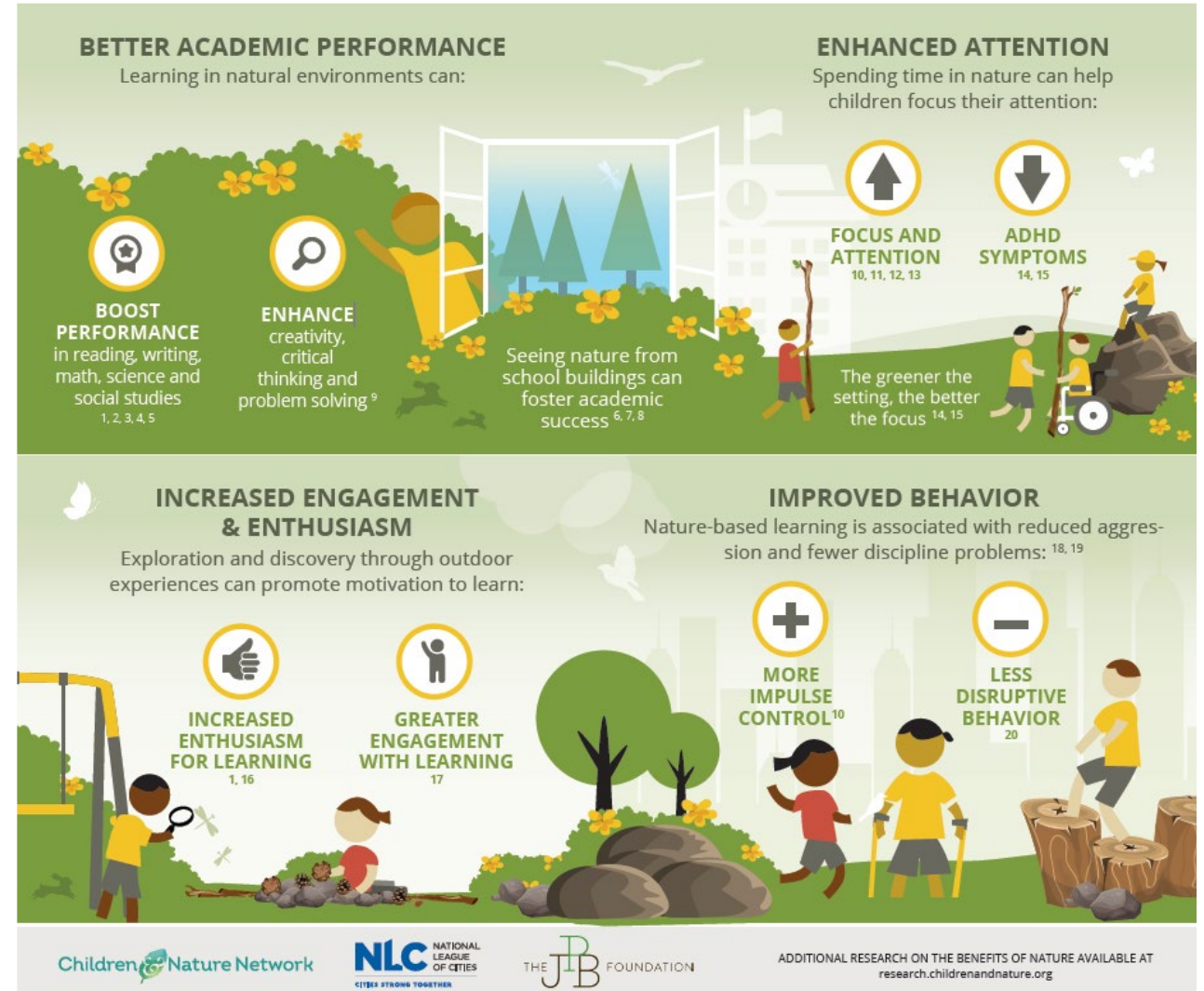


Benefits of Nature-Based Learning

- ***Informal, Outdoor Education:*** Experiential learning that occurs in nature-based settings, outside of a traditional classroom
- Learning in nature has many benefits
 - Improved creativity and critical thinking
 - Enhanced attention and focus, particularly with ADHD
 - Increased enthusiasm for learning
 - Improved impulse control & behavior
- These benefits translate into greater participation in programs

NATURE CAN IMPROVE ACADEMIC OUTCOMES

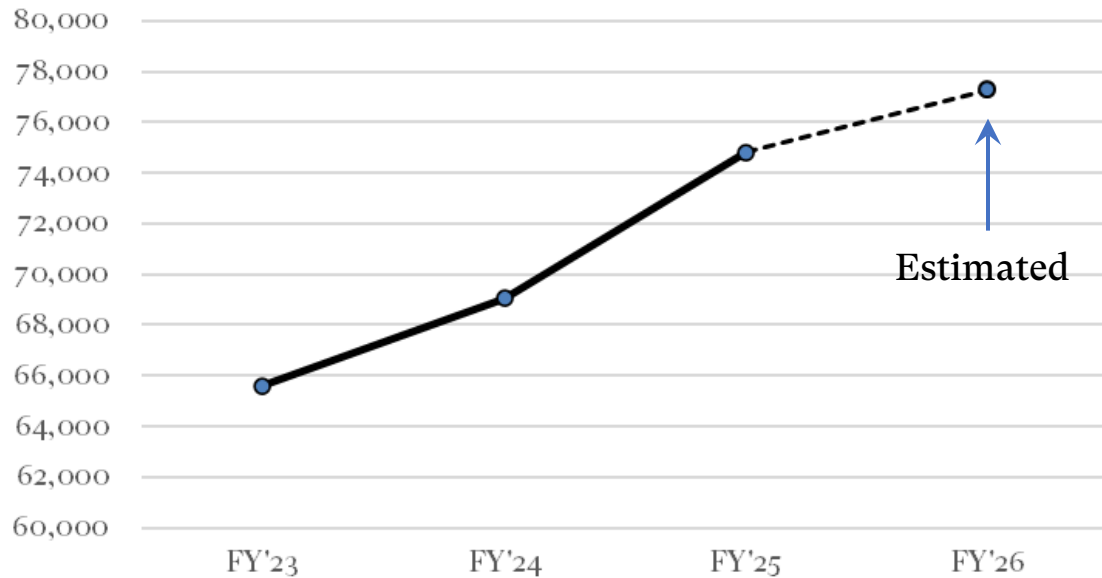
Spending time in nature enhances educational outcomes by improving children's academic performance, focus, behavior and love of learning.



Trends in School Audiences

- Increase in school audiences, despite some external challenges
- Largest increase with K-2 audiences
- Increase in participation in teacher education programs

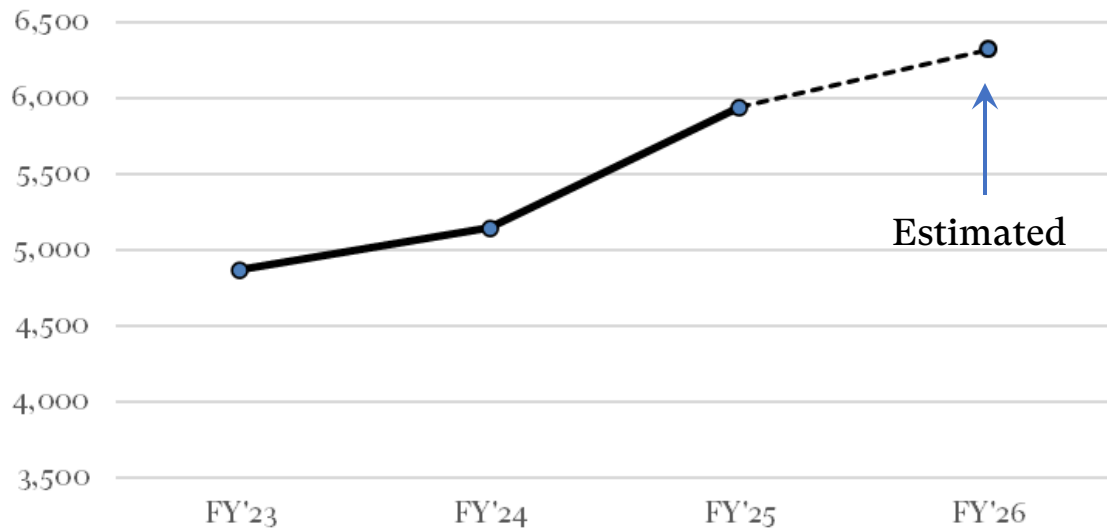
Attendance: School Programs



Trends in Family Audiences

- Increase in demand for outdoor programming by parents
- Early and young learner programs are particularly in demand
- *e.g.*, Nature Explorers, Sprouts, Nature Camp

Attendance:
Early Learner & Camp Programs



QUESTIONS?



NYBG & NYC DISTRICT 9 EARLY LEARNING PARTNERSHIP

Harry Sherman
Community Superintendent District 9



COMMUNITY SCHOOL DISTRICT 9





THE YOUNG
SPROUT WHO
PLANTED THE
SEED FOR THIS
MEANINGFUL
PARTNERSHIP

Community School District 9 is nestled within one of the poorest congressional districts in the United States and is in high need of resources to ensure equitable access so that scholars can belong, excel, and thrive. This partnership aims to send kindergarten students from Community School District 9 to the New York Botanical Garden, fostering an early connection to nature and promoting environmental stewardship. This trip will serve as an immersive, hands-on learning experience for young scholars, allowing them to explore diverse ecosystems, engage with science, and connect with their community's rich natural heritage.



KEY
OPPORTUNITIES

THREE OPPORTUNITIES FOR EVERY KINDERGARTEN STUDENT TO VISIT THE NYBG

1

Edible Academy



2

Everett Children's
Adventure Garden

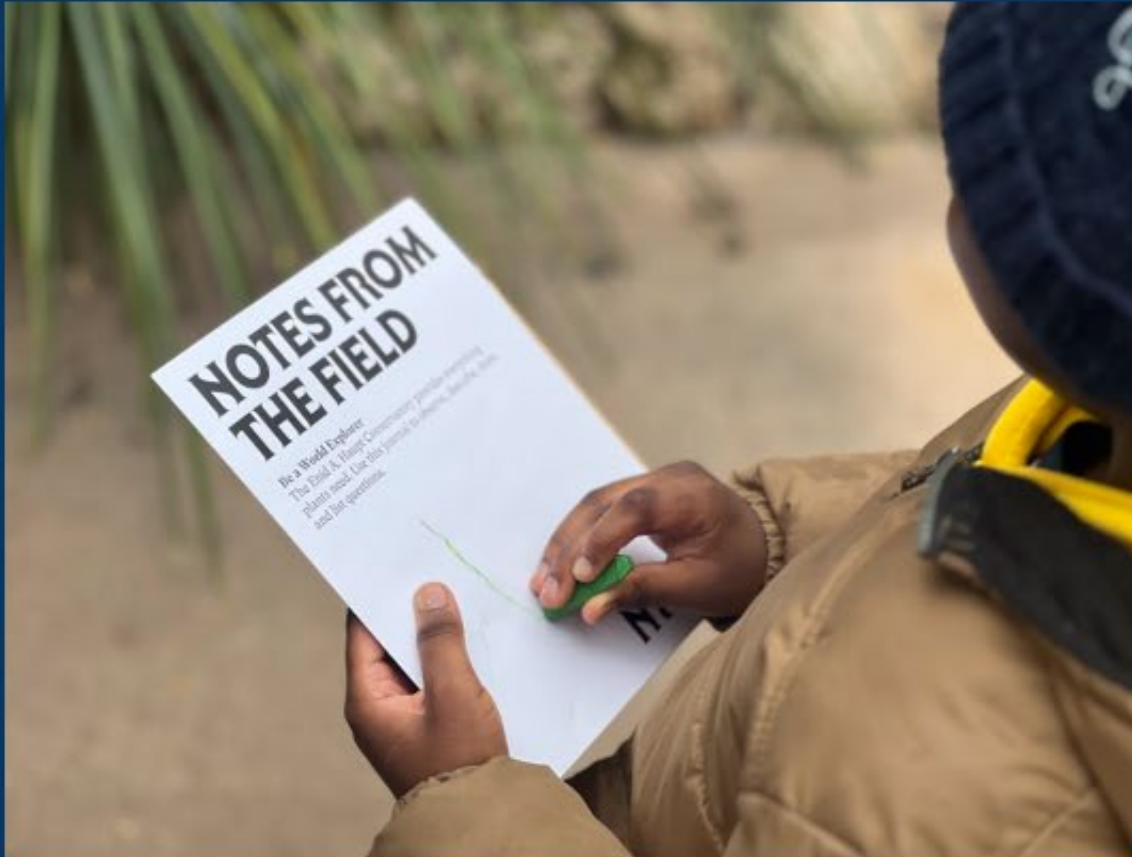


3

Enid A Haupt
Conservatory



TOGETHER WE ARE



- Building joy in learning
- Fostering critical literacy
- Strengthening student identity
- Restructuring learning environments



This trip represents a powerful opportunity to invest in the academic, social, and emotional development of young learners in Community School District 9. By supporting this initiative, we are creating a foundation for future success, ensuring all scholars not only thrive academically but grow into conscientious, critically literate citizens who can advocate for a more equitable world.

WHAT DOES THIS COLLABORATION REPRESENT?

THANK YOU!



QUESTIONS?



YOUNG LEARNERS AT NYBG

Pattie Hulse
Associate Vice President of Children's Education



Successes and Lessons from Programs for Young Learners: Rebuilding the Pipeline

- School Programs
- Registered Programs



New School Partnerships and Outreach

- CSD 9 Kindergarten Explorers and PreK Pilot
- STEM Education Network
- NYC PS Climate Action Days



ECAG REOPENING AND FAMILY ENGAGEMENT





Families in ECAG's
Seedlings Circle

EARLY LEARNER REGISTERED PROGRAMS





SPROUTS



NATURE CAMP

DISCUSSION:

Think about a time that you felt deeply connected to nature.

How do our programs and spaces at NYBG provide lasting connections to nature for young children?



QUESTIONS?



ADJOURNMENT

Kate Solomon
Chair of the Education Committee



EDUCATION COMMITTEE MEETING

November 14, 2025

NEW YORK BOTANICAL GARDEN

